

Slovenska različica

## eSLOG 2.0 - Elektronsko naročilo



## **Pravice in stiki**

eSLOG je blagovna znamka Gospodarske zbornice Slovenije. Dokumentacijo eSLOG 2.0 Elektronsko naročilo je pripravila delovna skupina projekta ROSE 2 »Readiness of Slovenian e-Invoicing 2«, št. 2019-SI-IA-0006, ki je sofinanciran prek Instrumenta za povezovanje Evrope (CEF). Za to publikacijo je odgovoren izključno avtor. Evropska unija ne odgovarja za kakršno koli morebitno uporabo v njej navedenih informacij.

Dokumentacija eSLOG 2.0 Elektronsko naročilo je objavljena na spletnem mestu Centra za ePoslovanje Slovenije <https://www.epos.si/>.

Uporabnikom je dovoljena uporaba vsega objavljenega gradiva za namene elektronskega poslovanja. Uporaba je brezplačna. Spreminjanje vsebine shem ni dovoljeno.

Gospodarska zbornica Slovenije in partnerji, ki so sodelovali v delovni skupini projekta ROSE 2 za pripravo standarda eSLOG 2.0, ne prevzemajo neposredne ali posredne odgovornosti za morebitno škodo, ki bi nastala pri uporabi standarda eSLOG 2.0.

### **Naslovi za stik:**

Gospodarska zbornica Slovenije  
Dimičeva 13  
1504 Ljubljana  
Telefonska št.: (01) 58 98 000  
E-naslov: [eslog@epos.si](mailto:eslog@epos.si)  
Splet: <https://www.epos.si>

ZZI, d. o. o.  
Pot k sejmišču 33  
1231 Ljubljana Črnuče  
Telefonska št.: (01) 53 03 300  
E-naslov: [info@zzi.si](mailto:info@zzi.si)  
Splet: <https://www.zzi.si>

Uprava Republike Slovenije za javna plačila  
Dunajska cesta 48  
1000 Ljubljana  
Telefonska št.: (01) 47 51 651  
E-naslov: [ujp@ujp.gov.si](mailto:ujp@ujp.gov.si)  
Splet: <http://www.ujp.gov.si>

## Kazalo

<b>1</b>	<b>Področje uporabe .....</b>	<b>4</b>
<b>2</b>	<b>Zveze s standardi .....</b>	<b>4</b>
<b>3</b>	<b>Izrazi in definicije .....</b>	<b>4</b>
<b>4</b>	<b>Proces naročanja .....</b>	<b>4</b>
<b>4.1</b>	<b>Vključene poslovne stranke ter njihove vloge in odnosi.....</b>	<b>4</b>
<b>4.2</b>	<b>Poslovni proces Naročila.....</b>	<b>5</b>
<b>5</b>	<b>Tipi naročil.....</b>	<b>6</b>
<b>6</b>	<b>Semantični podatkovni model eNaročila .....</b>	<b>6</b>
<b>6.1</b>	<b>Semantični model .....</b>	<b>6</b>
<b>6.2</b>	<b>Poslovna pravila.....</b>	<b>8</b>
<b>7</b>	<b>Sestava sporočila za eNaročilo.....</b>	<b>10</b>
<b>8</b>	<b>Razvejitevni diagram za eNaročilo .....</b>	<b>12</b>
<b>9</b>	<b>Podatki o segmentih eNaročila .....</b>	<b>14</b>
<b>10</b>	<b>Šifranti v eNaročilu .....</b>	<b>61</b>
	<b>Dodatek A (informativni) Poslovni termini (BT) .....</b>	<b>92</b>
<b>A.1</b>	<b>Seznam in opis poslovnih terminov (BT) in skupin poslovnih terminov (BG) .....</b>	<b>92</b>
	<b>Dodatek B (informativni) Shema eSLOG 2.0 eNaročilo .....</b>	<b>95</b>
<b>B.1</b>	<b>Shema .XML.....</b>	<b>95</b>
	<b>Dodatek C (informativni) Demonstracijski primer uporabe.....</b>	<b>96</b>
<b>C.1</b>	<b>Primer uporabe elementov segmenta .....</b>	<b>96</b>
	<b>Literatura.....</b>	<b>97</b>

## 1 Področje uporabe

Namen dokumenta je opredeliti semantični model in sintaktično obliko sporočila za elektronsko naročilo ter omogočiti učinkovito izvajanje in večjo uporabo elektronskega poslovanja pri postopku naročanja, ki temelji na tej obliki.

## 2 Zveze s standardi

Za uporabo tega standarda so, delno ali v celoti, nujno potrebni spodaj navedeni dokumenti. Pri datiranih sklicevanjih se uporablja le navedena izdaja. Pri nedatiranih sklicevanjih se uporablja zadnja izdaja publikacije (vključno z dopolnili).

- eSLOG 2.0 - Splošna navodila za elektronsko naročilo, elektronsko potrditev naročila in elektronsko dobavnico (v nadaljevanju eSLOG 2.0 Splošna navodila)

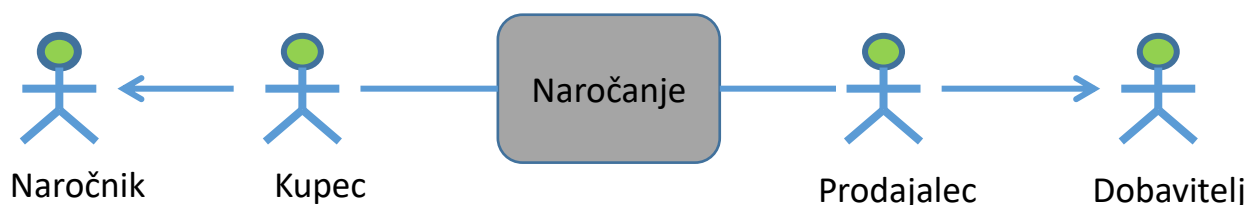
## 3 Izrazi in definicije

V tem dokumentu so uporabljeni izrazi in definicije, ki so podani v dokumentu eSLOG 2.0 Splošna navodila.

## 4 Proces naročanja

### 4.1 Vključene poslovne stranke ter njihove vloge in odnosi

V osnovnem postopku nabave sodelujeta dva poslovna partnerja, Naročnik in Dobavitelj. Vsak partner lahko v postopku izpolni dve ali tri vloge.



Naročnik ima vlogo kupca (komercialna vloga, ki sklene pogodbo s prodajalcem) in nabavnika (operativno vlogo, ki naroči blago, prejema blago in storitve).

V okviru komercialnega procesa nakupa v organizaciji po opredelitvi potreb za naročilo s tehničnega in komercialnega vidika sledi iskanje ponudb. Po prejetih ponudbah enota analizira ponudbe in izbire najprimernejšega dobavitelja. Po pogajanju in sklenitvi pogodbe pa nabavna enota skladno s planskimi potrebami operativno naroča potrebne izdelke oziroma storitve.

Na strani Dobavitelja ima ta vlogo prodajalca (komercialno vlogo, ki se dogovarja o pogojih dobave), dostave (pripravi in sproži dostavo naročenega blaga ali storitve) in prejemnika plačila – Računovodjo (vloga, ki prejme plačilo).

Spodnja preglednica prikazuje definicije partnerjev in vloge postopka naročanja.

Kupec	Kupec je pravna oseba ali organizacija, ki deluje v imenu stranke in ki kupuje ali kupuje blago ali storitve.
-------	---

Prodajalec	Prodajalec je pravna oseba ali organizacija, ki deluje v imenu dobavitelja in ki kupcu prodaja blago ali storitve.
Nabavnik	Oseba ali enota, ki sproži naročilo
Računovodja	Oseba ali enota, ki v imenu stranke prejme račun.
Prejemnik	Lokacija, kamor prodajalec ali odpremna stranka v imenu prodajalca dostavi blago.
Dostavno mesto	Enota, kamor prejemnik pošlje blago. Končno mesto dostave.

## 4.2 Poslovni proces Naročila

Nabava je veliko več kot samo preprosti postopek, ko naše potrebe v pisni obliki posredujemo dobavitelju. Celoten postopek ima več faz, od nastanka potreb do dobave blaga in aktivnosti, za katere je odgovorna nabava po dobavi in uporabi blaga ali storitve.

Nabavni proces ni omejen le na nabavni oddelek. V celotnem procesu nabave sodeluje več oddelkov ali služb, s katerimi je potrebno dobro sporazumevanje in sodelovanje med vsemi. Tako na primer za pripravo specifikacije materialov poskrbijo tehnologi, nabavna služba na podlagi izdelane specifikacije poišče potencialne dobavitelje, izvede povpraševanje, izdelava analizo ponudb in izbere najboljšega dobavitelja. Pred podpisom pogodbe z dobaviteljem vsebino pogodbe pregleda tudi pravna služba in poda svoje mnenje o njeni ustreznosti s pravnega vidika.

V praksi gremo skozi vse stopnje nabavnega procesa ob prvem izboru dobavitelja, kadar se odločamo o novih materialih, kadar se odločamo »narediti ali kupiti« itn. Redne nabave pri poznanih dobaviteljih surovin, polizdelkov, sestavnih delov itn. pomenijo bolj ali manj ponavljajoče se nakupe, ki jih realiziramo na najbolj optimalen način z vidika stroškov in porabe časa.

Pri operativni izvedbi posameznih naročil nabavna služba pripravi naročilo na osnovi vnaprej poznanih parametrov:

- Izbrani dobavitelji
- Poznani pogoji dobave
- Definirane potrebe po posameznih materialih ali storitvah, njihove potrebne količine
- Potrebna dinamika dostave (dostavni roki, termini)
- Lokacije dostave
- Logistični podatki

Uporaba strukturiranih in točnih podatkov bo naročniku IN dobavitelju omogočila koriščenje vseh prednosti, ki jih eNaročanje nudi v primerjavi s papirnim poslovanjem, vendar morajo biti za učinkovito eNaročanje izpolnjeni določeni pogoji, med drugimi:

- Usklajene šifre artiklov – naročnik in dobavitelj se morata vnaprej dogovoriti za šifrant izdelkov, saj sicer avtomatizirano eNaročanje ni mogoče.
- Usklajene enote mere.
- Usklajene šifre lokacij.

- Usklajeni in dogovorjeni ceniki.

## 5 Tipi naročil

V standardu eSLOG 2.0 elektronsko naročilo so predvideni trije različni tipi naročil. Ne glede na tip so naročila navadno poslana na osnovi pogodbe ali drugega predhodnega dogovora.

Šifra	Tip	Opis
220	Naročilo (angl. order)	Splošen tip naročila, pri katerem naročnik pri dobavitelju naroči blago ali storitve.
221	Okvirno naročilo (angl. blanket order)	Naročilo, ki dovoljuje več dostav prek daljšega časovnega obdobja. Takšna naročila se običajno uporabljajo, ko naročnik pogosto naroča blago. Zaradi večjih količin se partnerja v veliko primerih dogovorita tudi za posebne pogoje pri cenah. Za okvirno naročilo je lahko izdanih več računov skladno z realiziranimi dobavami ali s predhodnim dogovorom.
227	Konsignacijsko naročilo (angl. consignment order)	Na podlagi konsignacijskega naročila dobavitelj pošlje blago naročniku, vendar pa inventar, dokler se blago ne uporabi, še vedno pripada dobavitelju. Račun za konsignacijsko naročilo se izstavi po uporabi blaga.

## 6 Semantični podatkovni model eNaročila

Semantični model eNaročila vključuje poslovne termine in poslovna pravila.

### 6.1 Semantični model

ID	Nivo	Kard.	Poslovni termin
BT-1	+	1..1	Unikatna številka sporočila, ki jo določi pošiljatelj
BT-2	+	1..1	Oznaka vrste naročila
BT-3	+	1..1	Številka naročila, ki jo določi pošiljatelj
BT-4	+	1..1	Vloga dokumenta naročila
BT-5	+	1..1	Datum in čas izdelave sporočila (137)
BT-6	+	0..1	Želen datum dobave (2)
BT-7	+	0..n	Preostali datumi, vezani na naročilo
BT-8	+	0..1	Navodila za dostavo v nestrukturirani obliki (DIN)
BT-9	+	0..1	Informacije glede nakupa v nestrukturirani obliki (PUR)
BT-10	+	1..1	Valuta zneskov na naročilu
BG-1	+	0..n	Referenčni dokumenti
BT-11	++	1..1	Tip referenčnega dokumenta, na katerega se naročilo navezuje
BT-12	++	1..1	Številka referenčnega dokumenta, na katerega se naročilo navezuje
BT-13	++	0..1	Datum referenčnega dokumenta, na katerega se naročilo navezuje
BG-2	+	1..1	Podatki o kupcu
BT-14	++	0..1	GLN kupca (BY)
BT-15	++	1..1	Davčna številka kupca (VA)
BT-16	++	0..n	Referenčni podatki kupca

ID	Nivo	Kard.	Poslovni termin
BG-3	++	0..1	Naziv in naslov kupca
BT-17	+++	1..1	Naziv kupca
BT-18	+++	1..1	Ulica in hišna številka kupca
BT-19	+++	1..1	Mesto kupca
BT-20	+++	1..1	Poštna številka kupca
BT-21	+++	1..1	Država kupca
BG-4	++	0..n	Kontaktne podatki kupca
BT-22	+++	0..1	Kontaktne oseba
BT-23	+++	0..1	Naslov za kontakt
BG-5	+	1..1	Podatki o dobavitelju
BT-24	++	0..1	GLN dobavitelja (SU)
BT-25	++	1..1	Davčna številka dobavitelja (VA)
BT-26	++	0..n	Referenčni podatek dobavitelja
BG-6	++	0..1	Naziv in naslov dobavitelja
BT-27	+++	1..1	Naziv dobavitelja
BT-28	+++	1..1	Ulica in hišna številka dobavitelja
BT-29	+++	1..1	Mesto dobavitelja
BT-30	+++	1..1	Poštna številka dobavitelja
BT-31	+++	1..1	Država dobavitelja
BG-7	++	0..n	Kontaktne podatki dobavitelja
BT-32	+++	0..1	Kontaktne oseba
BT-33	+++	0..1	Naslov za kontakt
BG-8	+	0..1	Podatki o dostavnem mestu
BT-34	++	0..1	GLN dostavnega mesta (DP)
BT-35	++	0..1	Referenčni podatek dostavnega mesta
BG-9	++	0..1	Naziv in naslov dostavnega mesta
BT-36	+++	0..1	Naziv dostavnega mesta
BT-37	+++	0..1	Ulica in hišna številka dostavnega mesta
BT-38	+++	0..1	Mesto dostavnega mesta
BT-39	+++	0..1	Poštna številka dostavnega mesta
BT-40	+++	0..1	Država dostavnega mesta
BG-10	++	0..n	Kontaktne podatki dostavnega mesta
BT-41	+++	0..1	Kontaktne oseba
BT-42	+++	0..1	Naslov za kontakt
BG-11	+	1..n	Podatki o postavkah
BT-43	++	1..1	Številka postavke
BT-44	++	0..1	GTIN-številka artikla, ki se naroča
BT-45	++	1..1	Količina naročenega artikla (21)
BT-46	++	1..1	Enota mere naročenega artikla
BT-47	++	0..1	Želen datum dobave artikla (2)
BT-48	++	0..1	Vrednost postavke (203)
BT-49	++	0..1	Informacije glede nakupa artikla v nestrukturirani obliki (PUR)
BG-12	++	0..n	Identifikacija naročenega artikla
BT-50	+++	1..1	Tip identifikacije artikla

ID	Nivo	Kard.	Poslovni termin
BT-51	+++	1..1	Številka identifikacije artikla
BT-52	+++	1..1	Vrsta identifikacije artikla
BT-53	+++	0..1	Opis artikla
BG-13	++	0..n	Podatki o ceni artikla
BT-54	+++	0..1	Vrsta cene artikla
BT-55	+++	0..1	Cena artikla
BT-56	+++	0..1	Specifikacija cene artikla
BT-57	+++	0..1	Količina na enoto cene
BT-58	+++	0..1	Merska enota cene

## 6.2 Poslovna pravila

ID	Opis	BT / BG
BR-01	Unikatna številka sporočila, ki jo določi pošiljatelj (BT-1), je obvezen podatek.	BT-1
BR-02	Oznaka vrste naročila (BT-2) je obvezen podatek.	BT-2
BR-03	Številka naročila, ki jo določi pošiljatelj (BT-3), je obvezen podatek.	BT-3
BR-03	Vloga dokumenta naročila (BT-4) je obvezen podatek.	BT-4
BR-04	Datum in čas izdelave sporočila (BT-5) sta obvezna podatka.	BT-5
BR-05	Valuta zneskov na naročilu (BT-10) je obvezen podatek.	BT-10
BR-06	Davčna številka kupca (BT-15) je obvezen podatek.	BT-15
BR-07	Davčna številka dobavitelja (BT-25) je obvezen podatek.	BT-25
BR-08	Če je naveden tip referenčnega dokumenta, na katerega se naročilo navezuje (BT-11), ali številka referenčnega dokumenta, na katerega se naročilo navezuje (BT-12), morata biti navedena oba podatka.	BT-11, BT-12
BR-09	Vse cene (BT-55) in zneski (BT-48) na naročilu morajo biti v isti valuti (BT-10).	BT-10, BT-48, BT-55
BR-10	Naročilo mora vsebovati vsaj eno postavko (BG-12).	BG-12
BR-11	Če ni vpisanega GLN kupca (BT-14), so naslednji podatki obvezni: <ul style="list-style-type: none"> <li>– Naziv kupca (BT-17)</li> <li>– Ulica in hišna številka kupca (BT-18)</li> <li>– Mesto kupca (BT-19)</li> <li>– Poštna številka kupca (BT-20)</li> <li>– Država kupca (BT-21)</li> </ul>	BT-14, BT-17, BT-18, BT-19, BT-20, BT-21



ID	Opis	BT / BG
BR-12	Če ni vpisanega GLN dobavitelja (BT-24), so naslednji podatki obvezni: <ul style="list-style-type: none"> <li>– Naziv dobavitelja (BT-27)</li> <li>– Ulica in hišna številka dobavitelja (BT-28)</li> <li>– Mesto dobavitelja (BT-29)</li> <li>– Poštna številka dobavitelja (BT-30)</li> <li>– Država dobavitelja (BT-31)</li> </ul>	BT-24, BT-27, BT-28, BT-29, BT-30, BT-31
BR-13	Če so vpisani podatki za dostavno mesto in to ni identificirano z GLN-jem dostavnega mesta (BT-34), so naslednji podatki obvezni: <ul style="list-style-type: none"> <li>– Naziv dostavnega mesta (BT-36)</li> <li>– Ulica in hišna številka dostavnega mesta (BT-37)</li> <li>– Mesto dostavnega mesta (BT-38)</li> <li>– Poštna številka dostavnega mesta (BT-39)</li> <li>– Država dostavnega mesta (BT-40)</li> </ul>	BT-34, BT-36, BT-37, BT-38, BT-39, BT-40
BR-14	Davčne številke na naročilu morajo imeti predpono države skladno z ISO-kodo po šifrantu ISO 3166-1 alpha-2. Izjemoma lahko Grčija uporablja kodo EL.	BT-19 BT-29
BR-15	Če ni vpisane GTIN-številke naročenega artikla (BT-44), so naslednji podatki obvezni: <ul style="list-style-type: none"> <li>– Tip identifikacije artikla (BT-50)</li> <li>– Številka identifikacije artikla (BT-51)</li> <li>– Vrsta identifikacije artikla (BT-52)</li> <li>– Opis artikla (BT-53)</li> </ul>	BT-44, BT-50, BT-51, BT-52, BT-53
BR-16	Vsaka vrstica v naročilu mora vsebovati identifikator vrstice (BT-43), ki mora biti unikaten znotraj naročila.	BT-43
BR-17	Vsaka postavka naročila mora vsebovati podatek o naročeni količini (BT-45).	BT-45
BR-18	Količine na naročilu (BT-45, BT-57) ne smejo biti negativne.	BT-45, BT-57
BR-19	Znesek vrednosti postavke (BT-48) ne sme biti negativen.	BT-48
BR-20	Cene artikla (BT-55) ne smejo biti negativne.	BT-55
BR-21	Če je vpisana cena artikla (BT-55), mora biti vpisana tudi vrsta cene artikla (BT-54).	BT-54 BT-55
BR-22	Če je na vrstici naročila navedena količina na enoto cene (BT-57), mora biti navedena tudi merska enota cene (BT-58).	BT-57, BT-58

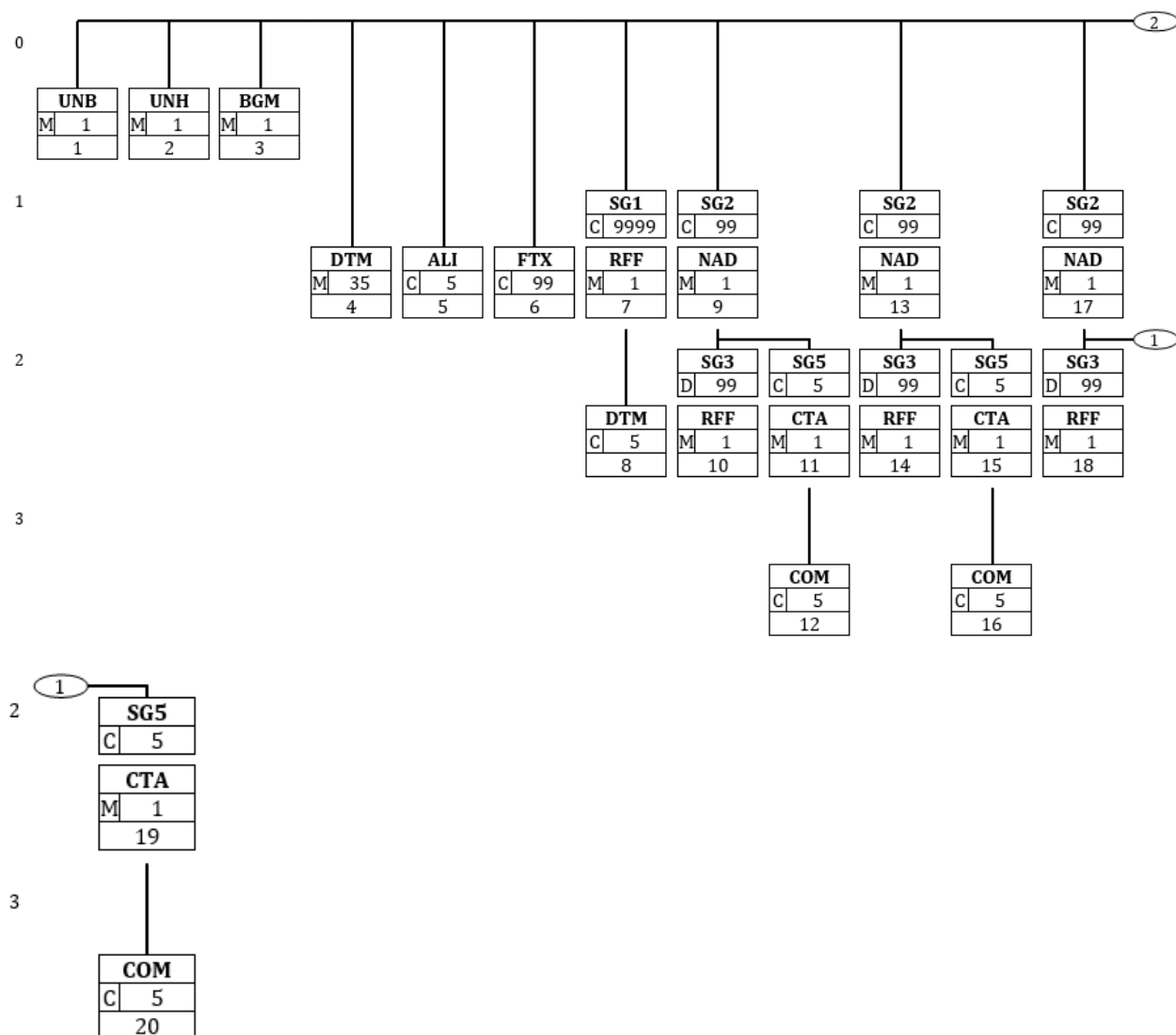
## 7 Sestava sporočila za eNaročilo

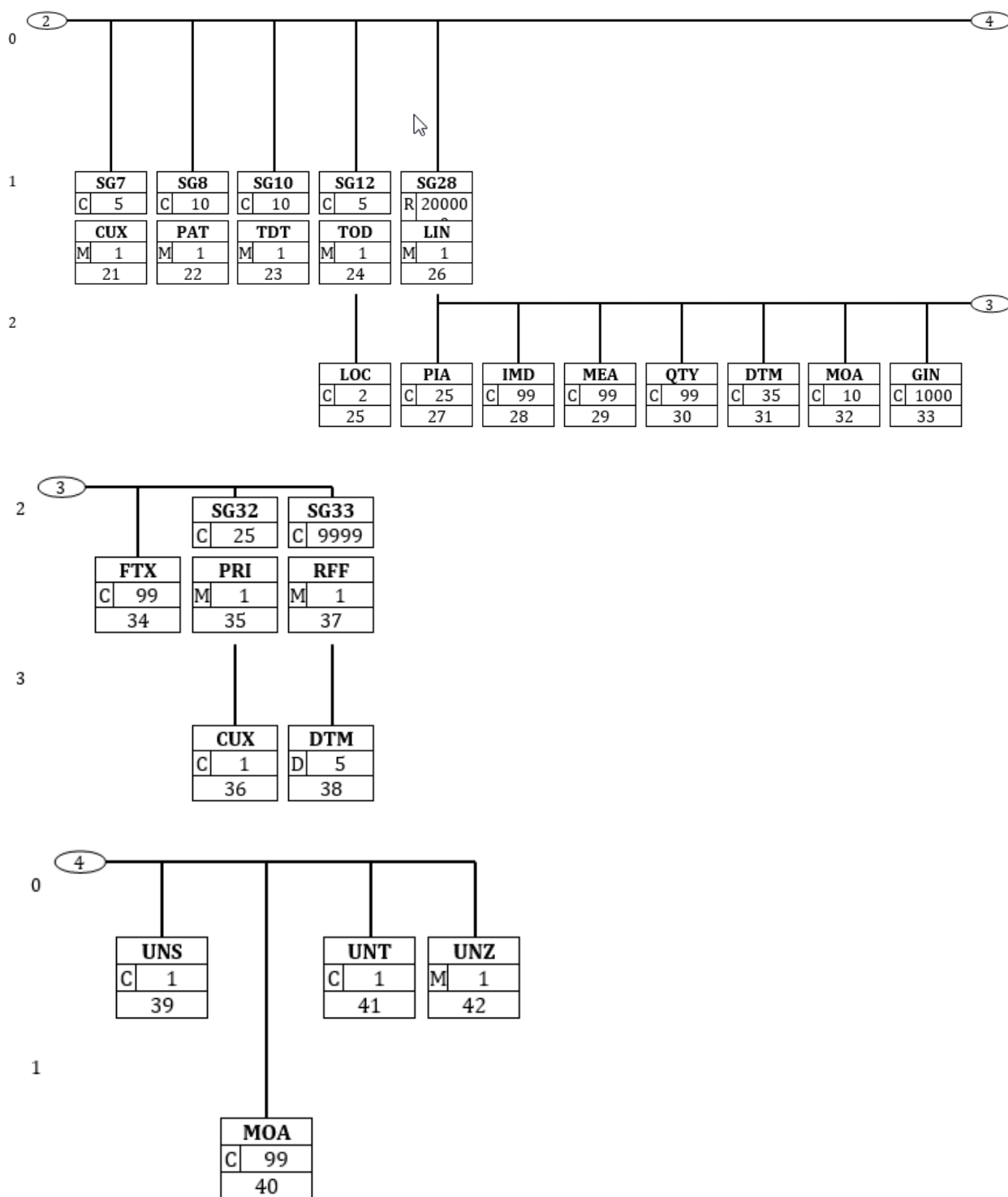
UNB	1	M	1	- Interchange header
UNH	2	M	1	- Message header
BGM	3	M	1	- Beginning of message
DTM	4	M	35	- Date/time/period
ALI	5	C	5	- Additional information
FTX	6	C	99	- Free text
SG1		C	9999	- RFF-DTM
RFF	7	M	1	- Reference
DTM	8	C	5	- Date/time/period
SG2		C	99	- NAD-SG3-SG5
NAD	9	M	1	- Name and address
SG3		D	99	- RFF
RFF	10	M	1	- Reference
SG5		C	5	- CTA-COM
CTA	11	M	1	- Contact information
COM	12	C	5	- Communication contact
SG2		C	99	- NAD-SG3-SG5
NAD	13	M	1	- Name and address
SG3		D	99	- RFF
RFF	14	M	1	- Reference
SG5		C	5	- CTA-COM
CTA	15	M	1	- Contact information
COM	16	C	5	- Communication contact
SG2		C	99	- NAD-SG3-SG5
NAD	17	M	1	- Name and address
SG3		D	99	- RFF
RFF	18	M	1	- Reference
SG5		C	5	- CTA-COM
CTA	19	M	1	- Contact information
COM	20	C	5	- Communication contact
SG7		C	5	- CUX
CUX	21	M	1	- Currencies
SG8		C	10	- PAT
PAT	22	M	1	- Payment terms basis
SG10		C	10	- TDT
TDT	23	M	1	- Details of transport
SG12		C	5	- TOD-LOC
TOD	24	M	1	- Terms of delivery or transport
LOC	25	C	2	- Place/location identification
SG28		R	200000	- LIN-PIA-IMD-MEA-QTY-DTM-MOA-GIN-FTX-SG32-SG33
LIN	26	M	1	- Line item
PIA	27	C	25	- Additional product id
IMD	28	C	99	- Item description
MEA	29	C	99	- Measurements
QTY	30	C	99	- Quantity
DTM	31	C	35	- Date/time/period
MOA	32	C	10	- Monetary amount
GIN	33	C	1000	- Goods identity number
FTX	34	C	99	- Free text
SG32		C	25	- PRI-CUX
PRI	35	M	1	- Price details
CUX	36	C	1	- Currencies
SG33		C	9999	- RFF-DTM

	RFF	37	M	1	- Reference
	DTM	38	D	5	- Date/time/period
	UNS	39	C	1	- Section control
	MOA	40	C	99	- Monetary amount
	UNT	41	C	1	- Message trailer
	UNZ	42	M	1	- Interchange trailer

## 8 Razvejivni diagram za eNaročilo

Razvejivni diagram predstavlja hierarhični prikaz segmentov.





## 9 Podatki o segmentih eNaročila

Posamezen segment je opisan po elementih in navodilih za uporabo teh elementov. Navedene so povezave na poslovne termine (BT) semantičnega modela in primer vrednosti iz demonstracijskega primera<sup>1</sup>. Pri opisih segmenta je uporabljeno poimenovanje po EANCOM 2002 S4, zato je opis v angleškem jeziku.

Segment number: 1

<b>UNB</b> - M 1 - Interchange header					
Function: To identify an interchange.					
Notes: 1. S001/0002, shall be '4' to indicate this version of the syntax. 2. The combination of the values carried in data elements S002, S003 and 0020 shall be used to identify uniquely the interchange, for the purpose of acknowledgement.					
e-SLOG 2.0					
Tag	Name	Format	St	Usage	Example
S001	SYNTAX IDENTIFIER		<b>M</b>		
0001	Syntax identifier	a4	<b>M</b>		UNOC
0002	Syntax version number	an1	<b>M</b>		4
0080	Service code list directory version number	an..6	<b>C</b>		X
0133	Character encoding, coded	an..3	<b>C</b>		X
S002	INTERCHANGE SENDER		<b>M</b>		
0004	Interchange sender identification	an..35	<b>M</b>		X
0007	Identification code qualifier	an..4	<b>C</b>		14
0008	Interchange sender internal identification	an..35	<b>C</b>		X
0042	Interchange sender internal sub-identification	an..35	<b>C</b>		X
S003	INTERCHANGE RECIPIENT		<b>M</b>		
0010	Interchange recipient identification	an..35	<b>M</b>		X
0007	Identification code qualifier	an..4	<b>C</b>		14
0014	Interchange recipient internal identification	an..35	<b>C</b>		X
0046	Interchange recipient internal sub-identification	an..35	<b>C</b>		X
S004	DATE AND TIME OF PREPARATION		<b>M</b>		
0017	Date	n8	<b>M</b>		20180813
0019	Time	n4	<b>M</b>		0924
0020	Interchange control reference	an..14	<b>M</b>		X

<sup>1</sup> Demonstracijski primer je v Dodatku C.

Segment number: 1

e-SLOG 2.0					
Tag	Name	Format	St	Usage	Example
S005	RECIPIENT REFERENCE/ PASSWORD DETAILS		<b>C</b>		
0022	Recipient reference/password	an..14	<b>M</b>		X
0025	Recipient reference/password qualifier	an2	<b>C</b>		AA
0026	Application reference	an..14	<b>C</b>		X
0029	Processing priority code	a1	<b>C</b>		A
0031	Acknowledgement request	n1	<b>C</b>		1
	Interchange agreement				X
0032	identifier	an..35	<b>C</b>		
0035	Test indicator	n1	<b>C</b>		1
Segment Notes:					

## eSLOG 2.0 - Elektronsko naročilo

Segment number: 2

<b>UNH</b> - M 1 - Message header					
<p>Function: To head, identify and specify a message.</p> <p>Notes: 1. Data element S009/0057 is retained for upward compatibility. The use of S016 and/or S017 is encouraged in preference. 2. The combination of the values carried in data elements 0062 and S009 shall be used to identify uniquely the message within its group (if used) or if not used, within its interchange, for the purpose of acknowledgement.</p>					
e-SLOG 2.0					
Tag	Name	Format	St	Usage	Example
0062	Message reference number	an..14	<b>M</b>	Sender's unique message reference. Sequence number of the messages in the interchange. DE 0062 in the UNT will be exactly the same. Sender generated. Numbers in ascending order without gaps. BT-1: Unikatna številka sporočila, določena s strani pošiljatelja.	1
S009	MESSAGE IDENTIFIER		<b>M</b>		
0065	Message type	an..6	<b>M</b>	ORDER = <b>Purchase order message</b> S	ORDERS
0052	Message version number	an..3	<b>M</b>	D = <b>Draft version/UN/EDIFACT Directory</b>	D
0054	Message release number	an..3	<b>M</b>		01B
0051	Controlling agency, coded	an..3	<b>M</b>	UN = <b>UN/CEFACT</b>	UN
<p>Segment Notes: This segment is used to head, identify and specify a message.</p>					



Segment number: 3

<b>BGM</b> - M 1 - Beginning of message					
Function: To indicate the type and function of a message and to transmit the identifying number.					
e-SLOG 2.0					
Tag	Name	Format	St	Usage	Example
C002	DOCUMENT/MESSAGE NAME		<b>R</b>		
1001	Document name code	an..3	<b>R</b>	220 = <b>Order</b> 221 = <b>Blanket order</b> 227 = <b>Consignment order</b> BT-2: Oznaka vrste naročila.	220
C106	DOCUMENT/MESSAGE IDENTIFICATION		<b>R</b>		
1004	Document identifier	an..70	<b>R</b>	Order Number assigned by document sender. It is recommended that the length of the document number be restricted to a maximum of 17 characters. BT-3: Številka naročila, določena s strani pošiljatelja.	128576
1225	Message function code	an..3	<b>R</b>	1 = <b>Cancellation</b> 9 = <b>Original</b> 31 = <b>Copy</b> BT-4: Vloga dokumenta naročila.	9
Segment Notes: This segment is used to indicate the type and function of a message and to transmit the identifying number.					

## eSLOG 2.0 - Elektronsko naročilo

Segment number: 4

<b>DTM</b> - M 35 - Date/time/period					
Function: To specify date, and/or time, or period.					
e-SLOG 2.0					
Tag	Name	Format	St	Usage	Example
C507	DATE/TIME/PERIOD		<b>M</b>		
2005	Date or time or period function code qualifier	an..3	<b>M</b>	2 = <b>Delivery date/time, requested</b> 11 = <b>Despatch date and/or time</b> 36 = <b>Expiry date</b> 63 = <b>Delivery date/time, latest</b> 64 = <b>Delivery date/time, earliest</b> 137 = <b>Document/message date/time</b> 200 = <b>Pick-up/collection date/time of cargo</b> 282 = <b>Confirmation date lead time</b> Code value 137 is required,	137
2380	Date or time or period value	an..35	<b>R</b>	BT-5: Datum in čas izdelave sporočila (137). BT-6: Željen datum dobave (2). BT-7: Ostali datumi vezani na naročilo.	20180813101850
2379	Date or time or period format code	an..3	<b>R</b>	204 = <b>CCYYMMDDHHMMSS</b> 102 = <b>CCYYMMDD</b>	204
Segment Notes: This segment is used to specify the date of the Order and, where required, requested dates concerning the delivery of the goods. DE 2005: Identification of the 'Document/message date/time' (code value 137) is mandatory in an EANCOM message.					

Segment number: 5

<b>ALI</b> - C 5 - Additional information					
Function: To indicate that special conditions due to the origin, customs preference, fiscal or commercial factors are applicable.					
e-SLOG 2.0					
Tag	Name	Format	St	Usage	Example
3239	Country of origin name code	an..3	N	Not used	
9213	Duty regime type code	an..3	N	Not used	
4183	Special condition code	an..3	C	148 = Supply direct delivery	148
Segment Notes: This segment is used to specify any additional information related to the complete order. This segment can be used to mark DSD (Direct store delivery)					

## eSLOG 2.0 - Elektronsko naročilo

Segment number: 6

<b>FTX</b> - C 99 - Free text					
Function: To provide free form or coded text information.					
e-SLOG 2.0					
Tag	Name	Format	St	Usage	Example
4451	Text subject code qualifier	an..3	<b>M</b>	DIN = <b>Delivery instructions</b> PUR = <b>Purchasing information</b> ZZZ = <b>Mutually defined</b>	DIN
4453	Free text function code	an..3	<b>N</b>	Not used	
C107	TEXT REFERENCE		<b>N</b>		
4441	Free text value code	an..17	<b>N</b>	Not used	
C108	TEXT LITERAL		<b>C</b>		
4440	Free text value	an..512	<b>M</b>	BT-8: Navodila za dostavo v nestrukturirani obliki(DIN). BT-9: Informacije glede nakupa v nestrukturirani obliki(PUR).	We accept product liability law of Slovenia.
Segment Notes: This segment is used to provide free form or coded text information for the entire purchase order. Use of this segment in free form is not recommended since it may inhibit automatic processing of the Order. Coded references to standard texts is an available functionality which enables automatic processing and reduces transmission and processing overheads. Standard texts should be mutually defined among trading partners and can be used to cover legal and other requirements.					

Segment number: 7

<b>SG1</b> - C 9999 - RFF-DTM <b>RFF</b> - M 1 - Reference					
Function: To specify a reference.					
e-SLOG 2.0					
Tag	Name	Format	St	Usage	Example
C506	REFERENCE		<b>M</b>		
1153	Reference code qualifier	an..4	<b>M</b>	BO = Blanket order number DQ = Delivery note number IA = Internal vendor number ON = Order number (buyer) PD = Promotion deal number UC = Ultimate customer's reference number VN = Order number (supplier) CT = Contract number BT-11: Tip referenčnega dokumenta, na katere se naročilo navezuje.	CT
1154	Reference identifier	an..70	<b>R</b>	BT-12: Številka referenčnega dokumenta, na katere se naročilo navezuje	652744
Segment Notes: This segment is used to specify other references which relate to the transmission, for example, contract numbers, price list umbers, etc. The references given at this point are valid for the whole order unless superseded by references at line level.					

## eSLOG 2.0 - Elektronsko naročilo

Segment number: 8

<b>SG1</b> - C 9999 - RFF-DTM <b>DTM</b> - C 5 - Date/time/period					
Function: To specify date, and/or time, or period.					
e-SLOG 2.0					
Tag	Name	Format	St	Usage	Example
C507	DATE/TIME/PERIOD		<b>M</b>		
2005	Date or time or period function code qualifier	an..3	<b>M</b>	171 = <b>Reference date/time</b>	171
2380	Date or time or period value	an..35	<b>R</b>	BT-13: Datum referenčnega dokumenta na katerega se naročilo navezuje.	20180801103820
2379	Date or time or period format code	an..3	<b>R</b>	204 = <b>CCYYMMDDHHMMSS</b> 102 = <b>CCYYMMDD</b>	204
Segment Notes: This segment is used to specify dates relating to the references given in the preceding RFF segment.					

Segment number: 9

<b>SG2</b> - C 99 - NAD-SG3-SG5 <b>NAD</b> - M 1 - Name and address					
Function: To specify the name/address and their related function, either by C082 only and/or unstructured by C058 or structured by C080 thru 3207.					
e-SLOG 2.0					
Tag	Name	Format	St	Usage	Example
3035	Party function code qualifier	an..3	<b>M</b>	BY = Buyer DP = Delivery party IV = Invoicee SR = Supplier's agent/ representative SU = Supplier UC = Ultimate consignee UD = Ultimate customer	BY
C082	PARTY IDENTIFICATION DETAILS		<b>D</b>	For identification of the party C082 must be used. Exceptions are only allowed for parties without GLN. For parties without GLN usage of SG3 is required.	
3039	Party identifier	an..70	<b>M</b>	GLN - Format n13 BT-14: GLN kupca (BY).	383234500 0189
1131	Code list identification code	an..17	<b>N</b>	Not used	
3055	Code list responsible agency code	an..3	<b>C</b>	9 = GS1	9
C058	NAME AND ADDRESS		<b>N</b>		
3124	Name and address description	an..35	<b>N</b>	Not used	
C080	PARTY NAME		<b>C</b>		
3036	Party name	an..70	<b>M</b>	BT-17: Naziv kupca.	Kupec d.o.o.
3036	Party name	an..70	<b>C</b>		X
3036	Party name	an..70	<b>C</b>		X
3036	Party name	an..70	<b>C</b>		X
3036	Party name	an..70	<b>C</b>		X
C059	STREET		<b>C</b>		
3042	Street and number or post office box identifier	an..35	<b>M</b>	BT-18: Ulica in hišna številka kupca.	Kupceva ulica 20
3042	Street and number or post office box identifier	an..35	<b>C</b>		X
3042	Street and number or post office box identifier	an..35	<b>C</b>		X
3042	Street and number or post office box identifier	an..35	<b>C</b>		X
3164	City name	an..35	<b>C</b>	BT-19: Mesto kupca.	Ljubljana- Crnuce
C819	COUNTRY SUB-ENTITY DETAILS		<b>N</b>		

## eSLOG 2.0 - Elektronsko naročilo

Segment number: 9

e-SLOG 2.0					
Tag	Name	Format	St	Usage	Example
3229	Country sub-entity name code	an..9	N	Not used	
3251	Postal identification code	an..17	C	BT-20: Poštna številka kupca.	1231
3207	Country name code	an..3	C	BT-21: Država kupca.	SI
<p><b>Segment Notes:</b></p> <p>This segment is used to identify the trading partners involved in the Order process. Identification of the buyer and supplier of goods and services is mandatory using DE's 3035 and C082. Additionally, the invoicee and/or delivery party should be specified if different to the buyer. The following composites and data elements are only used when a coded name and address can not be used or there is a requirement to furnish the full name and address for the trading party. The affected composites and data elements are as follows: C080 - C059 - 3164 - C819 - 3251 - 3207</p>					



Segment number: 10

<b>SG2</b>	- C	99 - NAD-SG3-SG5			
<b>SG3</b>	- D	99 - RFF			
<b>RFF</b>	- M	1 - Reference			
Function: To specify a reference.					
e-SLOG 2.0					
Tag	Name	Format	St	Usage	Example
C506	REFERENCE		M		
1153	Reference code qualifier	an..4	M	VA = VAT registration number IT = Internal customer number IA = Internal vendor number YC1 = Additional party identification (GS1 Temporary Code)	VA
1154	Reference identifier	an..70	R	BT-15: Davčna številka kupca (VA). BT-16: Ostali referenčni podatki kupca.	SI12345678
Segment Notes: This segment is used to specify reference numbers related to the party specified in the previous NAD segment. For Buyer(BY) and Supplier(SU) usage of VAT registration number(VA) is required. Usage of other codes should be mutually defined among trading partners.					

## eSLOG 2.0 - Elektronsko naročilo

Segment number: 11

<b>SG2</b>	- C	99 - NAD-SG3-SG5
<b>SG5</b>	- C	5 - CTA-COM
<b>CTA</b>	- M	1 - Contact information

Function:  
To identify a person or a department to whom communication should be directed.

e-SLOG 2.0					
Tag	Name	Format	St	Usage	Example
3139	Contact function code	an..3	<b>R</b>	OC = <b>Order contact</b> WH = <b>Warehouse</b> CR = <b>Customer relations</b> IC = <b>Information contact</b> Qualifier CR may only be used for consumer(NAD+UC)	OC
C056	DEPARTMENT OR EMPLOYEE DETAILS		<b>C</b>		
3413	Department or employee name code	an..17	<b>N</b>	Not used	
3412	Department or employee name	an..256	<b>C</b>	BT-22: Kontaktne osebe kupca.	Ana Novak

Segment Notes:  
This segment is used to identify contact details for the party specified in the previous NAD segment. The GLN - Format n13 - is particularly suitable for this purpose.

Segment number: 12

<b>SG2</b>	- C	99 - NAD-SG3-SG5			
<b>SG5</b>	- C	5 - CTA-COM			
<b>COM</b>	- C	5 - Communication contact			
Function: To identify a communication number of a department or a person to whom communication should be directed.					
e-SLOG 2.0					
Tag	Name	Format	St	Usage	Example
C076	COMMUNICATION CONTACT		M		
3148	Communication address identifier	an..512	M	BT-23: Naslovi za kontakt kupca.	ana. novak@kup ec.si
3155	Communication address code qualifier	an..4	M	EM = <b>Electronic mail</b> TE = <b>Telephone</b>	EM
Segment Notes: This segment identifies the communications number, and type of communications, for the person or department identified in the preceding CTA segment.					

## eSLOG 2.0 - Elektronsko naročilo

Segment number: 13

<b>SG2</b>	- C	99 - NAD-SG3-SG5			
<b>NAD</b>	- M	1 - Name and address			
Function: To specify the name/address and their related function, either by C082 only and/or unstructured by C058 or structured by C080 thru 3207.					
e-SLOG 2.0					
Tag	Name	Format	St	Usage	Example
3035	Party function code qualifier	an..3	<b>M</b>	BY = Buyer DP = Delivery party IV = Invoicee SR = Supplier's agent/ representative SU = Supplier UC = Ultimate consignee UD = Ultimate customer	SU
C082	PARTY IDENTIFICATION DETAILS		<b>D</b>	For identification of the party C082 must be used. Exceptions are only allowed for parties without GLN. For parties without GLN usage of SG3 is required.	
3039	Party identifier	an..70	<b>M</b>	GLN - Format n13 BT-24: GLN dobavitelja (SU).	383456700 0210
1131	Code list identification code	an..17	<b>N</b>	Not used	
3055	Code list responsible agency code	an..3	<b>C</b>	9 = GS1	9
C058	NAME AND ADDRESS		<b>N</b>		
3124	Name and address description	an..35	<b>N</b>	Not used	
C080	PARTY NAME		<b>C</b>		
3036	Party name	an..70	<b>M</b>	BT-27: Naziv dobavitelja.	Dobavitelj d.o.o.
3036	Party name	an..70	<b>C</b>		X
3036	Party name	an..70	<b>C</b>		X
3036	Party name	an..70	<b>C</b>		X
3036	Party name	an..70	<b>C</b>		X
C059	STREET		<b>C</b>		
3042	Street and number or post office box identifier	an..35	<b>M</b>	BT-28: Ulica in hišna številka dobavitelja.	Dobavitelje va ulica 20
3042	Street and number or post office box identifier	an..35	<b>C</b>		X
3042	Street and number or post office box identifier	an..35	<b>C</b>		X
3042	Street and number or post office box identifier	an..35	<b>C</b>		X
3164	City name	an..35	<b>C</b>	BT-29: Mesto dobavitelja.	Nova Gorica
C819	COUNTRY SUB-ENTITY DETAILS		<b>N</b>		

Segment number: 13

e-SLOG 2.0					
Tag	Name	Format	St	Usage	Example
3229	Country sub-entity name code	an..9	N	Not used	
3251	Postal identification code	an..17	C	BT-30: Poštna številka dobavitelja.	5000
3207	Country name code	an..3	C	BT-31: Država dobavitelja.	SI
<p><b>Segment Notes:</b></p> <p>This segment is used to identify the trading partners involved in the Order process. Identification of the buyer and supplier of goods and services is mandatory using DE's 3035 and C082. Additionally, the invoicee and/or delivery party should be specified if different to the buyer. The following composites and data elements are only used when a coded name and address can not be used or there is a requirement to furnish the full name and address for the trading party. The affected composites and data elements are as follows: C080 - C059 - 3164 - C819 - 3251 - 3207</p>					

## eSLOG 2.0 - Elektronsko naročilo

Segment number: 14

<b>SG2</b>	- C	99 - NAD-SG3-SG5			
<b>SG3</b>	- D	99 - RFF			
<b>RFF</b>	- M	1 - Reference			
Function: To specify a reference.					
e-SLOG 2.0					
Tag	Name	Format	St	Usage	Example
C506	REFERENCE		<b>M</b>		
1153	Reference code qualifier	an..4	<b>M</b>	VA = <b>VAT registration number</b> IT = <b>Internal customer number</b> IA = <b>Internal vendor number</b> YC1 = <b>Additional party identification (GS1 Temporary Code)</b>	VA
1154	Reference identifier	an..70	<b>R</b>	BT-25: Davčna številka dobavitelja(VA). BT-26: Referenčni podatek dobavitelja.	SI12345678
Segment Notes: This segment is used to specify reference numbers related to the party specified in the previous NAD segment. For Buyer(BY) and Supplier(SU) usage of VAT registration number(VA) is required. Usage of other codes should be mutually defined among trading partners.					

Segment number: 15

<b>SG2</b>	- C	99 - NAD-SG3-SG5
<b>SG5</b>	- C	5 - CTA-COM
<b>CTA</b>	- M	1 - Contact information

Function:  
To identify a person or a department to whom communication should be directed.

e-SLOG 2.0					
Tag	Name	Format	St	Usage	Example
3139	Contact function code	an..3	<b>R</b>	OC = <b>Order contact</b> WH = <b>Warehouse</b> CR = <b>Customer relations</b> IC = <b>Information contact</b> Qualifier CR may only be used for consumer(NAD+UC)	IC
C056	DEPARTMENT OR EMPLOYEE DETAILS		<b>C</b>		
3413	Department or employee name code	an..17	<b>N</b>	Not used	
3412	Department or employee name	an..256	<b>C</b>	BT-32: Kontaktne osebe dobavitelja.	Tine Novak

Segment Notes:  
This segment is used to identify contact details for the party specified in the previous NAD segment. The GLN - Format n13 - is particularly suitable for this purpose.

## eSLOG 2.0 - Elektronsko naročilo

Segment number: 16

<b>SG2</b>	- C	99 - NAD-SG3-SG5			
<b>SG5</b>	- C	5 - CTA-COM			
<b>COM</b>	- C	5 - Communication contact			
Function: To identify a communication number of a department or a person to whom communication should be directed.					
e-SLOG 2.0					
Tag	Name	Format	St	Usage	Example
C076	COMMUNICATION CONTACT		<b>M</b>		
3148	Communication address identifier	an..512	<b>M</b>	BT-33: Naslovi za kontakt dobavitelja.	tine. novak@dob avitelj.si
3155	Communication address code qualifier	an..4	<b>M</b>	EM = <b>Electronic mail</b> TE = <b>Telephone</b>	EM
Segment Notes: This segment identifies the communications number, and type of communications, for the person or department identified in the preceding CTA segment.					



Segment number: 17

<b>SG2</b> - C 99 - NAD-SG3-SG5 <b>NAD</b> - M 1 - Name and address					
Function: To specify the name/address and their related function, either by C082 only and/or unstructured by C058 or structured by C080 thru 3207.					
e-SLOG 2.0					
Tag	Name	Format	St	Usage	Example
3035	Party function code qualifier	an..3	M	BY = Buyer DP = Delivery party IV = Invoicee SR = Supplier's agent/ representative SU = Supplier UC = Ultimate consignee UD = Ultimate customer	DP
C082	PARTY IDENTIFICATION DETAILS		D	For identification of the party C082 must be used. Exceptions are only allowed for parties without GLN. For parties without GLN usage of SG3 is required.	
3039	Party identifier	an..70	M	GLN - Format n13 BT-34: GLN dostavnega mesta (DP).	383234500 0372
1131	Code list identification code	an..17	N	Not used	
3055	Code list responsible agency code	an..3	C	9 = GS1	9
C058	NAME AND ADDRESS		N		
3124	Name and address description	an..35	N	Not used	
C080	PARTY NAME		C		
3036	Party name	an..70	M	BT-36: Naziv dostavnega mesta.	Dostavno Mesto d.o.o.
3036	Party name	an..70	C		X
3036	Party name	an..70	C		X
3036	Party name	an..70	C		X
3036	Party name	an..70	C		X
C059	STREET		C		
3042	Street and number or post office box identifier	an..35	M	BT-37: Ulica in hišna številka dostavnega mesta.	Dostavna ulica 20
3042	Street and number or post office box identifier	an..35	C		X
3042	Street and number or post office box identifier	an..35	C		X
3042	Street and number or post office box identifier	an..35	C		X
3164	City name	an..35	C	BT-38: Mesto dostavnega mesta.	Koper
C819	COUNTRY SUB-ENTITY DETAILS		N		

## eSLOG 2.0 - Elektronsko naročilo

Segment number: 17

e-SLOG 2.0					
Tag	Name	Format	St	Usage	Example
3229	Country sub-entity name code	an..9	N	Not used	
3251	Postal identification code	an..17	C	BT-39: Poštna številka dostavnega mesta.	6000
3207	Country name code	an..3	C	BT-40: Država dostavnega mesta.	SI
<p>Segment Notes:</p> <p>This segment is used to identify the trading partners involved in the Order process. Identification of the buyer and supplier of goods and services is mandatory using DE's 3035 and C082. Additionally, the invoicee and/or delivery party should be specified if different to the buyer. The following composites and data elements are only used when a coded name and address can not be used or there is a requirement to furnish the full name and address for the trading party. The affected composites and data elements are as follows: C080 - C059 - 3164 - C819 - 3251 - 3207</p>					

Segment number: 18

SG2

- C

99 - NAD-SG3-SG5

SG3

- D

99 - RFF

RFF

- M

1 - Reference

Function:

To specify a reference.

e-SLOG 2.0					
Tag	Name	Format	St	Usage	Example
C506	REFERENCE		M		
1153	Reference code qualifier	an..4	M	VA = VAT registration number IT = Internal customer number IA = Internal vendor number YC1 = Additional party identification (GS1 Temporary Code)	IT
1154	Reference identifier	an..70	R	BT-35: Ostali referenčni podatki dostavnega mesta.	8765432

Segment Notes:

This segment is used to specify reference numbers related to the party specified in the previous NAD segment. For Buyer(BY) and Supplier(SU) usage of VAT registration number(VA) is required. Usage of other codes should be mutually defined among trading partners.

## eSLOG 2.0 - Elektronsko naročilo

Segment number: 19

<b>SG2</b>	- C	99 - NAD-SG3-SG5
<b>SG5</b>	- C	5 - CTA-COM
<b>CTA</b>	- M	1 - Contact information

Function:  
To identify a person or a department to whom communication should be directed.

e-SLOG 2.0					
Tag	Name	Format	St	Usage	Example
3139	Contact function code	an..3	<b>R</b>	OC = <b>Order contact</b> WH = <b>Warehouse</b> CR = <b>Customer relations</b> IC = <b>Information contact</b> Qualifier CR may only be used for consumer(NAD+UC)	IC
C056	DEPARTMENT OR EMPLOYEE DETAILS		<b>C</b>		
3413	Department or employee name code	an..17	<b>N</b>	Not used	
3412	Department or employee name	an..256	<b>C</b>	BT-41: Kontaktne osebe dostavnega mesta.	Maja Novak

Segment Notes:  
This segment is used to identify contact details for the party specified in the previous NAD segment. The GLN - Format n13 - is particularly suitable for this purpose.

Segment number: 20

g

<b>SG2</b>	- C	99 - NAD-SG3-SG5
<b>SG5</b>	- C	5 - CTA-COM
<b>COM</b>	- C	5 - Communication contact

Function:  
To identify a communication number of a department or a person to whom communication should be directed.

e-SLOG 2.0					
Tag	Name	Format	St	Usage	Example
C076	COMMUNICATION CONTACT		<b>M</b>		
3148	Communication address identifier	an..512	<b>M</b>	BT-42: Naslovi za kontakt dostavnega mesta.	maja. novak@dos t_mesto.si
3155	Communication address code qualifier	an..4	<b>M</b>	EM = <b>Electronic mail</b> TE = <b>Telephone</b>	EM

Segment Notes:  
This segment identifies the communications number, and type of communications, for the person or department identified in the preceding CTA segment.

## eSLOG 2.0 - Elektronsko naročilo

Segment number: 21

<b>SG7</b>	- C	5 - CUX			
<b>CUX</b>	- M	1 - Currencies			
Function: To specify currencies used in the transaction and relevant details for the rate of exchange.					
e-SLOG 2.0					
Tag	Name	Format	St	Usage	Example
C504	CURRENCY DETAILS		R		
6347	Currency usage code qualifier	an..3	R	2 = Reference currency	2
6345	Currency identification code	an..3	R	EUR = Euro ISO 4217 three alpha. BT-10 Valuta zneskov na naročilu.	EUR
Segment Notes: This segment is used to specify currency information for the complete order. The CUX segment is mandatory for international exchanges.					

Segment number: 22

<b>SG8</b> - C 10 - PAT <b>PAT</b> - M 1 - Payment terms basis					
Function: To specify the payment terms basis.					
Notes: 1. This segment will be removed effective with directory D.02B.					
e-SLOG 2.0					
Tag	Name	Format	St	Usage	Example
4279	Payment terms type code qualifier	an..3	<b>M</b>	1 = Basic 22 = Discount	1
C110	PAYMENT TERMS		<b>N</b>		
4277	Payment terms description identifier	an..17	<b>N</b>	Not used	
C112	TERMS/TIME INFORMATION		<b>R</b>		
2475	Time reference code	an..3	<b>M</b>	8 = Date of confirmation of order received 21 = Date goods received by buyer	8
2009	Terms time relation code	an..3	<b>C</b>	3 = After reference	3
2151	Period type code	an..3	<b>C</b>	D = Day	D
2152	Period count quantity	n..3	<b>R</b>		30
Segment Notes: This segment is used by the issuer of the order to request special payment terms for the current order only.					

## eSLOG 2.0 - Elektronsko naročilo

Segment number: 23

<b>SG10</b> - C 10 - TDT <b>TDT</b> - M 1 - Details of transport					
Function: To specify the transport details such as mode of transport, means of transport, its conveyance reference number and the identification of the means of transport. The segment may be pointed to by the TPL segment.					
e-SLOG 2.0					
Tag	Name	Format	St	Usage	Example
8051	Transport stage code qualifier	an..3	<b>M</b>	20 = <b>Main-carriage transport</b>	20
8028	Means of transport journey identifier	an..17	<b>N</b>	Not used	
C220	MODE OF TRANSPORT		<b>R</b>		
8067	Transport mode name code	an..3	<b>R</b>	10 = <b>Maritime transport</b> 20 = <b>Rail transport</b> 30 = <b>Road transport</b> 40 = <b>Air transport</b> 50 = <b>Mail</b> 60 = <b>Multimodal transport</b> 100 = <b>Courier service (GS1 Temporary Code)</b>	10
C228	TRANSPORT MEANS		<b>C</b>		
8179	Transport means description code	an..8	<b>D</b>	Code list 8179 is not restricted. D:Data Element 8179 is only used when the type of transport must be specifically identified, that is, a generic description such as road transport is unsuitable.	23
C040	CARRIER		<b>C</b>		
3127	Carrier identifier	an..17	<b>C</b>	GLN - Format n13 GLN of carrier/forwarding agency	383230001 4893
1131	Code list identification code	an..17	<b>N</b>	Not used	
3055	Code list responsible agency code	an..3	<b>C</b>	9 = <b>GS1</b>	9
3128	Carrier name	an..35	<b>C</b>		Transporter d.o.o.
Segment Notes: This segment is used to specify transport instructions for the whole Purchase Order, such as requesting an express transport service. Data Elements 8179 and 8178 are only used when the type of transport must be specifically identified, that is, a generic description such as road transport is unsuitable.					



Segment number: 24

<b>SG12</b> - C 5 - TOD-LOC <b>TOD</b> - M 1 - Terms of delivery or transport					
Function: To specify terms of delivery or transport.					
e-SLOG 2.0					
Tag	Name	Format	St	Usage	Example
4055	Delivery or transport terms function code	an..3	C	6 = <b>Delivery condition</b>	6
4215	Transport charges payment method code	an..3	N	Not used	
C100	TERMS OF DELIVERY OR TRANSPORT		R		
4053	Delivery or transport terms description code	an..3	R	CIF = <b>Cost, Insurance, Freight to named destination</b> INCOTERMS (See EANCOM Codes Set)	CIF
1131	Code list identification code	an..17	R	2E = <b>Incoterms 2000 (GS1 Temporary Code)</b>	2E
3055	Code list responsible agency code	an..3	C	9 = <b>GS1</b>	9
Segment Notes: This segment is used to specify the terms of delivery for the complete order.					

## eSLOG 2.0 - Elektronsko naročilo

Segment number: 25

<b>SG12</b>	- C	5 - TOD-LOC			
<b>LOC</b>	- C	2 - Place/location identification			
Function: To identify a place or a location and/or related locations.					
e-SLOG 2.0					
Tag	Name	Format	St	Usage	Example
3227	Location function code qualifier	an..3	M	1 = Place of terms of delivery	1
C517	LOCATION IDENTIFICATION		R		
3225	Location name code	an..25	C		LOC1
1131	Code list identification code	an..17	N	Not used	
3055	Code list responsible agency code	an..3	C	ZZZ = Mutually defined	ZZZ
3224	Location name	an..256	C		Location 1
Segment Notes: This segment is used if the terms of delivery specified in the TOD segment requires the identification specifically of the place of delivery.					

Segment number: 26

<b>SG28</b> - R 200000 - LIN-PIA-IMD-MEA-QTY-DTM-MOA-GIN-FTX-SG32-SG33 <b>LIN</b> - M 1 - Line item					
Function: To identify a line item and configuration.					
e-SLOG 2.0					
Tag	Name	Format	St	Usage	Example
1082	Line item identifier	an..6	<b>R</b>	Application generated number of the count of the order lines. BT-43: Številka postavke.	1
1229	Action request/notification description code	an..3	<b>N</b>	Not used	
C212	ITEM NUMBER IDENTIFICATION		<b>C</b>		
7140	Item identifier	an..35	<b>R</b>	Format n..14 GTIN - this is the number of the article being ordered. If GTIN is not used then C212 is not used. BT-44: GTIN številka artikla, ki se naroča.	761234500 0206
7143	Item type identification code	an..4	<b>R</b>	SRV = <b>GS1 Global Trade Item Number</b>	SRV
Segment Notes: This segment is used to identify the item being ordered.					

## eSLOG 2.0 - Elektronsko naročilo

Segment number: 27

<b>SG28</b> - R 200000 - LIN-PIA-IMD-MEA-QTY-DTM-MOA-GIN-FTX-SG32-SG33 <b>PIA</b> - C 25 - Additional product id					
Function: To specify additional or substitutional item identification codes.					
e-SLOG 2.0					
Tag	Name	Format	St	Usage	Example
4347	Product identifier code qualifier	an..3	<b>M</b>	1 = <b>Additional identification</b> 2 = <b>Identification for potential substitution</b> 5 = <b>Product identification</b> Product Id function coded has the following restricted coded functions: 1 - Additional Identification - To provide an additional identity for the product identified in the LIN segment. The additional identification can consist of: A supplemental identification which provides more information complementary to the main trade item number provided in the LIN segment, e.g., a batch number, promotional variant number, product group number, etc. An alternative identification which may be used where no main trade item number has been provided in the LIN segment, e.g., a buyers article number, an HIBC code, etc. 2 - Identification for substitution - To provide the trade item number of a product which can substitute the product identified by the trade item number provided in the LIN segment when the latter is temporarily unavailable, e.g., a similar or identical product coded with a different GTIN (article coded in a different country), a different size unit of the same product, a similar product with for example a different brand name. 5 - Product Identification - To provide the primary product identification code when no GTIN has been provided in the LIN segment. GTIN should not be used in conjunction with this code value. It should be noted that when this code is used the product code specified here is the code which should be used for invoicing purposes. BT-50: Tip identifikacije artikla.	5
C212	ITEM NUMBER IDENTIFICATION		<b>M</b>		

Segment number: 27

e-SLOG 2.0					
Tag	Name	Format	St	Usage	Example
7140	Item identifier	an..35	<b>R</b>	BT-51: Številka identifikacije artikla.	ABC1234
7143	Item type identification code	an..4	<b>R</b>	GB = Buyer's internal product group code IN = Buyer's item number SA = Supplier's article number SRV = GS1 Global Trade Item Number SUE = GS1 Global Returnable Asset Identifier, non-serialised BT-52: Vrsta identifikacije artikla.	IN
1131	Code list identification code	an..17	<b>N</b>	Not used	
3055	Code list responsible agency code	an..3	<b>C</b>	9 = GS1 91 = Assigned by supplier or supplier's agent 92 = Assigned by buyer or buyer's agent	91
Segment Notes: This segment is used to specify additional or substitutional item identification codes such as a buyer's, or seller's item number.					

## eSLOG 2.0 - Elektronsko naročilo

Segment number: 28

<b>SG28</b> - R 200000 - LIN-PIA-IMD-MEA-QTY-DTM-MOA-GIN-FTX-SG32-SG33					
<b>IMD</b> - C 99 - Item description					
Function: To describe an item in either an industry or free format.					
e-SLOG 2.0					
Tag	Name	Format	St	Usage	Example
7077	Description format code	an..3	R	F = <b>Free-form</b>	F
C272	ITEM CHARACTERISTIC		N		
7081	Item characteristic code	an..3	N	Not used	
C273	ITEM DESCRIPTION		R		
7009	Item description code	an..17	C	CU = <b>Consumer unit (GS1 Permanent Code)</b> TU = <b>Traded unit (GS1 Permanent Code)</b>	CU
1131	Code list identification code	an..17	N	Not used	
3055	Code list responsible agency code	an..3	C	9 = <b>GS1</b>	9
7008	Item description	an..256	R	BT-53: Opis artikla.	Brezalkohol na pijaca ABC
7008	Item description	an..256	C		Zaboj
Segment Notes: This segment is used to describe the current line item. It is recommended that this segment only be used for coded descriptions. Data element 7008 in clear text should only be used when no product code is available or when free-form descriptions are required by trading partners.					

Segment number: 29

<b>SG28</b> - R 200000 - LIN-PIA-IMD-MEA-QTY-DTM-MOA-GIN-FTX-SG32-SG33					
<b>MEA</b> - C 99 - Measurements					
Function: To specify physical measurements, including dimension tolerances, weights and counts.					
e-SLOG 2.0					
Tag	Name	Format	St	Usage	Example
6311	Measurement purpose code qualifier	an..3	<b>M</b>	PD = <b>Physical dimensions (product ordered)</b>	PD
C502	MEASUREMENT DETAILS		<b>R</b>		
6313	Measured attribute code	an..3	<b>R</b>	DI = <b>Diameter</b> HT = <b>Height dimension</b> LN = <b>Length dimension</b> WD = <b>Width dimension</b> Other attributes from codelist may be mutually defined among trading partners.	DI
C174	VALUE/RANGE		<b>C</b>		
6411	Measurement unit code	an..8	<b>M</b>	MTR = <b>metre</b> Other attributes from codelist may be mutually defined among trading partners.	MTR
6314	Measurement value	an..18	<b>C</b>		0.25
Segment Notes: This segment is used to specify the actual physical dimensions of the product being ordered where that product is sold in variable lengths or volumes. This segment must be used in conjunction with the LIN segment for the precise identification of the ordered product.					

## eSLOG 2.0 - Elektronsko naročilo

Segment number: 30

<b>SG28</b> - R 200000 - LIN-PIA-IMD-MEA-QTY-DTM-MOA-GIN-FTX-SG32-SG33 <b>QTY</b> - C 99 - Quantity					
Function: To specify a pertinent quantity.					
e-SLOG 2.0					
Tag	Name	Format	St	Usage	Example
C186	QUANTITY DETAILS		<b>M</b>		
6063	Quantity type code qualifier	an..3	<b>M</b>	21 = Ordered quantity 59 = Number of consumer units in the traded unit	21
6060	Quantity	an..35	<b>M</b>	BT-45: Količina naročenega artikla (21).	48
6411	Measurement unit code	an..8	<b>D</b>	KGM = kilogram LTR = litre MTR = metre PCE = Piece (GS1 Temporary Code)  Other attributes from codelist may be mutually defined among trading partners. D: This DE is only used if the product being identified is of variable quantity. BT-46: Enota mere naročenega artikla.	KGM
<b>Segment Notes:</b> This segment is used to specify the total quantity ordered for the current line identified in the LIN segment. DE 6063: Code value '59' is only to be used in the orders message for confirmation purposes and not to change any information previously agreed and contained in a price or product catalogue.					



Segment number: 31

<b>SG28</b> - R 200000 - LIN-PIA-IMD-MEA-QTY-DTM-MOA-GIN-FTX-SG32-SG33					
<b>DTM</b> - C 35 - Date/time/period					
Function: To specify date, and/or time, or period.					
e-SLOG 2.0					
Tag	Name	Format	St	Usage	Example
C507	DATE/TIME/PERIOD		<b>M</b>		
2005	Date or time or period function code qualifier	an..3	<b>M</b>	2 = Delivery date/time, requested 11 = Despatch date and/or time 63 = Delivery date/time, latest 64 = Delivery date/time, earliest 200 = Pick-up/collection date/time of cargo 282 = Confirmation date lead time 361 = Best before date	2
2380	Date or time or period value	an..35	<b>R</b>	BT-47: Željen datum dobave artikla (2).	20180813171850
2379	Date or time or period format code	an..3	<b>R</b>	102 = CCYYMMDD 204 = CCYYMMDDHHMMSS	204
Segment Notes: This segment is used to specify the date of the Order and, where required, requested dates concerning the delivery of the goods.					

## eSLOG 2.0 - Elektronsko naročilo

Segment number: 32

<b>SG28</b> - R 200000 - LIN-PIA-IMD-MEA-QTY-DTM-MOA-GIN-FTX-SG32-SG33					
<b>MOA</b> - C 10 - Monetary amount					
Function: To specify a monetary amount.					
e-SLOG 2.0					
Tag	Name	Format	St	Usage	Example
C516	MONETARY AMOUNT		<b>M</b>		
5025	Monetary amount type code qualifier	an..3	<b>M</b>	52 = <b>Discount amount</b> 203 = <b>Line item amount</b>	203
5004	Monetary amount	n..35	<b>R</b>	BT-48: Vrednost postavke (203).	1700.00
Segment Notes: This segment is used to specify line item monetary amount. For specific purposes usage of this segment should be mutually defined among trading partners.					

Segment number: 33

<b>SG28</b> - R 200000 - LIN-PIA-IMD-MEA-QTY-DTM-MOA-GIN-FTX-SG32-SG33					
<b>GIN</b> - C 1000 - Goods identity number					
Function: To give specific identification numbers, either as single numbers or ranges.					
e-SLOG 2.0					
Tag	Name	Format	St	Usage	Example
7405	Object identification code qualifier	an..3	<b>M</b>	BX = <b>Batch number</b>	BX
C208	IDENTITY NUMBER RANGE		<b>M</b>		
7402	Object identifier	an..35	<b>M</b>		123abcd89 0
Segment Notes: This segment is used to indicate printed numbers or the range of numbers to be printed on coupons or gift cheques. D:This segment may be used to send the batchnumber. The use of this segment must be bilaterally agreed between buyer/seller.					

## eSLOG 2.0 - Elektronsko naročilo

Segment number: 34

<b>SG28</b> - R 200000 - LIN-PIA-IMD-MEA-QTY-DTM-MOA-GIN-FTX-SG32-SG33 <b>FTX</b> - C 99 - Free text					
Function: To provide free form or coded text information.					
e-SLOG 2.0					
Tag	Name	Format	St	Usage	Example
4451	Text subject code qualifier	an..3	<b>M</b>	ADK = Promotion information ACD = Reason ADK = Promotion information PUR = Purchasing information ZZZ = Mutually defined	PUR
4453	Free text function code	an..3	<b>N</b>	Not used	
C107	TEXT REFERENCE		<b>N</b>		
4441	Free text value code	an..17	<b>N</b>	Not used	
C108	TEXT LITERAL		<b>R</b>		
4440	Free text value	an..512	<b>M</b>	BT-49: Informacije glede nakupa artikla v nestrukturirani obliki (PUR).	Special promotion
4440	Free text value	an..512	<b>C</b>		X
4440	Free text value	an..512	<b>C</b>		X
4440	Free text value	an..512	<b>C</b>		X
4440	Free text value	an..512	<b>C</b>		X
<b>Segment Notes:</b> This segment is used to specify any special requirements for the current line item. Use of this segment in free form is not recommended since it may inhibit automatic processing of the Order. Coded references to standard texts is an available functionality which enables automatic processing and reduces transmission and processing overheads. Standard texts should be mutually defined among trading partners and can be used to cover legal and other requirements.					

Segment number: 35

<b>SG28</b>	- R	200000	- LIN-PIA-IMD-MEA-QTY-DTM-MOA-GIN-FTX-SG32-SG33
<b>SG32</b>	- C	25	- PRI-CUX
<b>PRI</b>	- M	1	- Price details
Function: To specify price information.			
e-SLOG 2.0			
Tag	Name	Format	St Usage Example
C509	PRICE INFORMATION		<b>R</b>
5125	Price code qualifier	an..3	<b>M</b> AAA = Calculation net AAB = Calculation gross AAE = Information price, excluding allowances or charges, including taxes AAF = Information price, excluding allowances or charges and taxes INF = Information BT-54: Vrsta cene artikla.
5118	Price amount	n..15	<b>R</b> BT-55: Cena artikla.
5375	Price type code	an..3	<b>N</b> Not used
5387	Price specification code	an..3	<b>C</b> INV = Invoice price DPR = Discount price DR = Dealer price LBL = Labelling price PRP = Promotional price RTP = Retail price BT-56: Specifikacija cene artikla.
5284	Unit price basis value	n..9	<b>C</b> BT-57: Količina na enoto cene.
6411	Measurement unit code	an..8	<b>C</b> KGM = kilogram LTR = litre MTR = metre PCE = Piece (GS1 Temporary Code) BT-58: Merska enota cene.
Segment Notes: This segment is used to detail the price for the current product identified in the LIN segment. The calculation price detailed in the Purchase Order will always be the Net Unit Price, i.e., Gross Price + Charges - Allowances. Data elements 5284 and 6411 are used when a product is a variable quantity product, e.g. price per 200 kilos, or when the unit of measure for purchasing, delivery, and invoicing are different for a product, e.g. sugar is not a variable quantity product but ordered and delivered in packs, and invoiced in kilos or tonnes.			

## eSLOG 2.0 - Elektronsko naročilo

Segment number: 36

<b>SG28</b> - R 200000 - LIN-PIA-IMD-MEA-QTY-DTM-MOA-GIN-FTX-SG32-SG33 <b>SG32</b> - C 25 - PRI-CUX <b>CUX</b> - C 1 - Currencies					
Function: To specify currencies used in the transaction and relevant details for the rate of exchange.					
e-SLOG 2.0					
Tag	Name	Format	St	Usage	Example
C504	CURRENCY DETAILS		<b>C</b>		
6347	Currency usage code qualifier	an..3	<b>M</b>	2 = <b>Reference currency</b>	2
6345	Currency identification code	an..3	<b>R</b>	EUR = <b>Euro</b>	EUR
6343	Currency type code qualifier	an..3	<b>R</b>	4 = <b>Invoicing currency</b> 9 = <b>Order currency</b>	4
Segment Notes: This segment is used to specify currency data related to the previous PRI segment.					

Segment number: 37

SG28

- R

200000

- LIN-PIA-IMD-MEA-QTY-DTM-MOA-GIN-FTX-SG32-SG33

SG33

- C

9999

- RFF-DTM

RFF

- M

1

- Reference

Function:

To specify a reference.

e-SLOG 2.0					
Tag	Name	Format	St	Usage	Example
C506	REFERENCE		M		
1153	Reference code qualifier	an..4	M	CR = Customer reference number CT = Contract number PD = Promotion deal number UC = Ultimate customer's reference number BO = Blanket order number	CR
1154	Reference identifier	an..70	R		94780043
1156	Document line identifier	an..6	C		1

Segment Notes:

This segment is used to identify references associated with the line item. This information may override what is specified in the heading section when the same qualifier is used. This segment may also be used to allocate a unique reference number to this line item in this order.

## eSLOG 2.0 - Elektronsko naročilo

Segment number: 38

<b>SG28</b>	- R	200000	- LIN-PIA-IMD-MEA-QTY-DTM-MOA-GIN-FTX-SG32-SG33
<b>SG33</b>	- C	9999	- RFF-DTM
<b>DTM</b>	- D	5	- Date/time/period
Function: To specify date, and/or time, or period.			
e-SLOG 2.0			
Tag	Name	Format	St Usage Example
C507	DATE/TIME/PERIOD		<b>M</b>
2005	Date or time or period function code qualifier	an..3	<b>M</b> 194 = <b>Start date/time</b> 206 = <b>End date/time</b> 171 = <b>Reference date/time</b>
2380	Date or time or period value	an..35	<b>R</b> 2018080100000
2379	Date or time or period format code	an..3	<b>R</b> 204 = <b>CCYYMMDDHHMMSS</b> 102 = <b>CCYYMMDD</b> 204
Segment Notes: This segment is used to specify dates and times associated with the preceding RFF segment. D:This segment may only be used to state start/end date of promotion.			



Segment number: 39

<b>UNS</b> - C 1 - Section control					
Function: To separate header, detail and summary sections of a message.  Notes: To be used by message designers only when required to avoid ambiguities.					
e-SLOG 2.0					
Tag	Name	Format	St	Usage	Example
0081	Section identification	a1	<b>M</b>		D
Segment Notes:					

## eSLOG 2.0 - Elektronsko naročilo

Segment number: 40

<b>MOA</b> - C 99 - Monetary amount					
Function: To specify a monetary amount.					
e-SLOG 2.0					
Tag	Name	Format	St	Usage	Example
C516	MONETARY AMOUNT		<b>M</b>		
5025	Monetary amount type code qualifier	an..3	<b>M</b>	79 = Total line items amount 125 = Taxable amount 86 = Message total monetary amount 176 = Message total duty/tax/fee amount 259 = Total charges 260 = Total allowances	79
5004	Monetary amount	n..35	<b>C</b>		150.00
Segment Notes:					

Segment number: 41

<b>UNT</b> - C 1 - Message trailer					
Function: To end and check the completeness of a message.					
Notes: 1. 0062, the value shall be identical to the value in 0062 in the corresponding UNH segment.					
e-SLOG 2.0					
Tag	Name	Format	St	Usage	Example
0074	Number of segments in a message	n..10	<b>M</b>		41
0062	Message reference number	an..14	<b>M</b>		1
Segment Notes:					

## eSLOG 2.0 - Elektronsko naročilo

Segment number: 42

<b>UNZ</b> - M 1 - Interchange trailer					
Function: To end and check the completeness of an interchange.					
Notes: 1. 0020, the value shall be identical to the value in 0020 in the corresponding UNB segment.					
e-SLOG 2.0					
Tag	Name	Format	St	Usage	Example
0036	Interchange control count	n..6	<b>M</b>		1
0020	Interchange control reference	an..14	<b>M</b>		X
Segment Notes:					

## 10 Šifranti v eNaročilu

To poglavje navaja mogoče vnose za določene elemente XML. Poleg seznama šifer sta navedena ime elementa XML in njegov opis. Imena polja so navedena brez predpone D\_, ki se pojavi v XML-sintaksi.

### 0001 Syntax identifier

Code	Code name/description
<b>UNOA</b>	UN/ECE level A As defined in the basic code table of ISO 646 with the exceptions of lower case letters, alternative graphic character allocations and national or application-oriented graphic character allocations.
<b>UNOB</b>	UN/ECE level B As defined in the basic code table of ISO 646 with the exceptions of alternative graphic character allocations and national or application-oriented graphic character allocations.
<b>UNOC</b>	UN/ECE level C As defined in ISO 8859-1 : Information processing - Part 1: Latin alphabet No. 1.
<b>UNOD</b>	UN/ECE level D As defined in ISO 8859-2 : Information processing - Part 2: Latin alphabet No. 2.
<b>UNOE</b>	UN/ECE level E As defined in ISO 8859-5 : Information processing - Part 5: Latin/Cyrillic alphabet.
<b>UNOF</b>	UN/ECE level F As defined in ISO 8859-7 : Information processing - Part 7: Latin/Greek alphabet.
<b>UNOG</b>	UN/ECE level G As defined in ISO 8859-3 : Information processing - Part 3: Latin alphabet.
<b>UNOH</b>	UN/ECE level H As defined in ISO 8859-4 : Information processing - Part 4: Latin alphabet.
<b>UNOI</b>	UN/ECE level I As defined in ISO 8859-6 : Information processing - Part 6: Latin/Arabic alphabet.
<b>UNOJ</b>	UN/ECE level J As defined in ISO 8859-8 : Information processing - Part 8: Latin/Hebrew alphabet.
<b>UNOK</b>	UN/ECE level K As defined in ISO 8859-9 : Information processing - Part 9: Latin alphabet.
<b>UNOW</b>	UN/ECE level W ISO 10646-1 octet with code extension technique to support UTF-8 (UCS Transformation Format, 8 bit) encoding.
<b>UNOX</b>	UN/ECE level X Code extension technique as defined by ISO 2022 utilising the escape techniques in accordance with ISO 2375.
<b>UNOY</b>	UN/ECE level Y ISO 10646-1 octet without code extension technique.

### 0002 Syntax version number

Code	Code name/description
<b>3</b>	Version 3 ISO 9735 Amendment 1:1992.
<b>4</b>	Version 4 ISO 9735:1998.

## 0007 Identification code qualifier

Code	Code name/description
14	GS1 Partner identification code assigned by GS1, an international organization of GS1 Member Organizations that manages the GS1 System.

## 0025 Recipient reference/password qualifier

Code	Code name/description
AA	Reference Recipient's reference/password is a reference.
BB	Password Recipient's reference/password is a password.

## 0029 Processing priority code

Code	Code name/description
A	Highest priority Requested processing priority is the highest.

## 0031 Acknowledgement request

Code	Code name/description
1	Requested Acknowledgement is requested.

## 0035 Test indicator

Code	Code name/description
1	Interchange is a test Indicates that the interchange is a test.
5	Interchange is a service provider test Indicates that this interchange is a test with a service provider.

## 0051 Controlling agency, coded

Code	Code name/description
UN	UN/CEFACT United Nations Centre for Trade Facilitation and Electronic Business (UN/CEFACT).

## 0052 Message version number

Code	Code name/description
<b>D</b>	Draft version/UN/EDIFACT Directory Message approved and issued as a draft message (Valid for directories published after March 1993 and prior to March 1997). Message approved as a standard message (Valid for directories published after March 1997).

## 0054 Message release number

Code	Code name/description
<b>1</b>	First release Message approved and issued in the first release of the year of the UNTDID (United Nations Trade Data Interchange Directory).
<b>3</b>	Third release, CONTRL message Third release of the service message type CONTRL. Approved and issued as document TRADE/WP.4/R.1186/Rev.1 (including Corr.1) for use with version 2 and 3 of the syntax.  Notes: This code shall only be used with the CONTRL message.
<b>01B</b>	Release 2001 - B Message approved and issued in the second 2001 release of the UNTDID (United Nations Trade Data Interchange Directory).

## 0065 Message type

Code	Code name/description
<b>ORDERS</b>	Purchase order message A code to identify the purchase order message.

## 0081 Section identification

Code	Code name/description
<b>D</b>	Header/detail section separation To qualify the segment UNS, when separating the header from the detail section of a message.
<b>S</b>	Detail/summary section separation To qualify the segment UNS, when separating the detail from the summary section of a message.

## 1001 Document name code

Code	Code name/description
<b>220</b>	Order Document/message by means of which a buyer initiates a transaction with a seller involving the supply of goods or services as specified, according to conditions set out in an offer, or otherwise known to the buyer.
<b>221</b>	Blanket order Usage of document/message for general order purposes with later split into quantities and delivery dates and maybe delivery locations.

<b>227</b>	Consignment order Order to deliver goods into stock with agreement on payment when goods are sold out of this stock.
------------	---

**1131 Code list identification code**

Code	Code name/description
<b>2E</b>	Incoterms 2000 (GS1 Temporary Code) Incoterms 2000 as published by the International Chamber of Commerce (ICC).

**1153 Reference code qualifier**

Code	Code name/description
<b>BO</b>	Blanket order number Reference number assigned by the order issuer to a blanket order.
<b>CR</b>	Customer reference number Reference number assigned by the customer to a transaction.
<b>CT</b>	Contract number Reference number of a contract concluded between parties.
<b>DQ</b>	Delivery note number Reference number assigned by the issuer to a delivery note.
<b>IA</b>	Internal vendor number Number identifying the company-internal vending department/unit.
<b>IT</b>	Internal customer number Number assigned by a seller, supplier etc. to identify a customer within his enterprise.
<b>ON</b>	Order number (buyer) [1022] Reference number assigned by the buyer to an order.
<b>PD</b>	Promotion deal number Number assigned by a vendor to a special promotion activity.
<b>UC</b>	Ultimate customer's reference number The originator's reference number as forwarded in a sequence of parties involved.
<b>VA</b>	VAT registration number Unique number assigned by the relevant tax authority to identify a party for use in relation to Value Added Tax (VAT).
<b>VN</b>	Order number (supplier) Reference number assigned by supplier to a buyer's purchase order.
<b>YC1</b>	Additional party identification (GS1 Temporary Code) Reference number to an additional party identification. This number may be the internal trading partner identification number used by a party to identify its trading parties.

**1225 Message function code**

Code	Code name/description
<b>1</b>	Cancellation Message cancelling a previous transmission for a given transaction.
<b>9</b>	Original Initial transmission related to a given transaction.



31	Copy Indicates that the message is a copy of an original message that has been sent, e.g. for action or information.
----	---

## 2005 Date or time or period function code qualifier

Code	Code name/description
2	Delivery date/time, requested Date on which buyer requests goods to be delivered.
11	Despatch date and/or time (2170) Date/time on which the goods are or are expected to be despatched or shipped.
36	Expiry date Date of expiry of the validity of a referenced document, price information or any other referenced data element with a limited validity period.
63	Delivery date/time, latest Date identifying a point of time after which goods shall not or will not be delivered.
64	Delivery date/time, earliest Date identifying a point in time before which the goods shall not be delivered.
137	Document/message date/time (2006) Date/time when a document/message is issued. This may include authentication.
171	Reference date/time Date/time on which the reference was issued.
194	Start date/time Date/time on which a period starts.
200	Pick-up/collection date/time of cargo Date/time at which the cargo is picked up.
206	End date/time Date/time on which a period (from - to) ends.
282	Confirmation date lead time Lead time is referenced to the date of confirmation.
361	Best before date The best before date.

## 2009 Terms time relation code

Code	Code name/description
3	After reference Payment terms related to time after reference date.

## 2151 Period type code

Code	Code name/description
D	Day The twenty-four hour period during which the earth completes one rotation on its axis.

## 2379 Date or time or period format code

Code	Code name/description
<b>102</b>	CCYYMMDD Calendar date: C = Century ; Y = Year ; M = Month ; D = Day.
<b>204</b>	CCYYMMDDHHMMSS Calendar date including time with seconds: C=Century;Y=Year; M=Month;D=Day;H=Hour; M=Minute;S=Second.

**2475 Time reference code**

Code	Code name/description
<b>8</b>	Date of confirmation of order received Payment time reference is date of confirmation received.
<b>21</b>	Date goods received by buyer Payment time reference is date when goods are received by buyer.

**3035 Party function code qualifier**

Code	Code name/description
<b>BY</b>	Buyer Party to whom merchandise and/or service is sold.
<b>DP</b>	Delivery party (3144) Party to which goods should be delivered, if not identical with consignee.
<b>IV</b>	Invoicee (3006) Party to whom an invoice is issued.
<b>SR</b>	Supplier's agent/representative (3254) Party representing the seller for the purpose of the trade transaction.
<b>SU</b>	Supplier Party who supplies goods and/or services.
<b>UC</b>	Ultimate consignee Party who has been designated on the invoice or packing list as the final recipient of the stated merchandise.
<b>UD</b>	Ultimate customer The final recipient of goods.

**3055 Code list responsible agency code**

Code	Code name/description
<b>9</b>	GS1 GS1 (formerly EAN International), an organisation of GS1 Member Organisations, which manages the GS1 System.
<b>91</b>	Assigned by supplier or supplier's agent Codes assigned by a seller or seller's agent.
<b>92</b>	Assigned by buyer or buyer's agent Codes assigned by a buyer or buyer's agent.
<b>ZZZ</b>	Mutually defined A code assigned within a code list to be used on an interim basis and as defined among trading partners until a precise code can be assigned to the code list.

**3139 Contact function code**

Code	Code name/description
<b>CR</b>	Customer relations Individual responsible for customer relations.
<b>IC</b>	Information contact Department/person to contact for questions regarding transactions.
<b>OC</b>	Order contact An individual to contact for questions regarding this order.
<b>WH</b>	Warehouse The warehouse contact within an organization.

**3155 Communication address code qualifier**

Code	Code name/description
<b>EM</b>	Electronic mail Exchange of mail by electronic means.
<b>TE</b>	Telephone Voice/data transmission by telephone.

**3207 Country name code**

Code	Code name/description
<b>AD</b>	ANDORRA
<b>AE</b>	UNITED ARAB EMIRATES
<b>AF</b>	AFGHANISTAN
<b>AG</b>	ANTIGUA AND BARBUDA
<b>AI</b>	ANGUILLA
<b>AL</b>	ALBANIA
<b>AM</b>	ARMENIA
<b>AN</b>	NETHERLANDS ANTILLES
<b>AO</b>	ANGOLA
<b>AQ</b>	ANTARCTICA
<b>AR</b>	ARGENTINA
<b>AS</b>	AMERICAN SAMOA
<b>AT</b>	AUSTRIA
<b>AU</b>	AUSTRALIA
<b>AW</b>	ARUBA
<b>AZ</b>	AZERBAIJAN
<b>BA</b>	BOSNIA AND HERZEGOVINA

**eSLOG 2.0 - Elektronsko naročilo**

<b>BB</b>	BARBADOS
<b>BD</b>	BANGLADESH
<b>BE</b>	BELGIUM
<b>BF</b>	BURKINA FASO
<b>BG</b>	BULGARIA
<b>BH</b>	BAHRAIN
<b>BI</b>	BURUNDI
<b>BJ</b>	BENIN
<b>BM</b>	BERMUDA
<b>BN</b>	BRUNEI DARUSSALAM
<b>BO</b>	BOLIVIA
<b>BR</b>	BRAZIL
<b>BS</b>	BAHAMAS
<b>BT</b>	BHUTAN
<b>BV</b>	BOUVET ISLAND
<b>BW</b>	BOTSWANA
<b>BY</b>	BELARUS
<b>BZ</b>	BELIZE
<b>CA</b>	CANADA
<b>CC</b>	COCOS (KEELING) ISLANDS
<b>CD</b>	CONGO, THE DEMOCRATIC REPUBLIC OF THE
<b>CF</b>	CENTRAL AFRICAN REPUBLIC
<b>CG</b>	CONGO
<b>CH</b>	SWITZERLAND
<b>CI</b>	COTE D'IVOIRE
<b>CK</b>	COOK ISLANDS
<b>CL</b>	CHILE
<b>CM</b>	CAMEROON
<b>CN</b>	CHINA
<b>CO</b>	COLOMBIA
<b>CR</b>	COSTA RICA
<b>CU</b>	CUBA
<b>CV</b>	CAPE VERDE
<b>CX</b>	CHRISTMAS ISLAND
<b>CY</b>	CYPRUS
<b>CZ</b>	CZECH REPUBLIC
<b>DE</b>	GERMANY
<b>DJ</b>	DJIBOUTI

<b>DK</b>	DENMARK
<b>DM</b>	DOMINICA
<b>DO</b>	DOMINICAN REPUBLIC
<b>DZ</b>	ALGERIA
<b>EC</b>	ECUADOR
<b>EE</b>	ESTONIA
<b>EG</b>	EGYPT
<b>EH</b>	WESTERN SAHARA
<b>ER</b>	ERITREA
<b>ES</b>	SPAIN
<b>ET</b>	ETHIOPIA
<b>FI</b>	FINLAND
<b>FJ</b>	FIJI
<b>FK</b>	FALKLAND ISLANDS (MALVINAS)
<b>FM</b>	MICRONESIA, FEDERATED STATES OF
<b>FO</b>	FAROE ISLANDS
<b>FR</b>	FRANCE
<b>GA</b>	GABON
<b>GB</b>	UNITED KINGDOM
<b>GD</b>	GRENADA
<b>GE</b>	GEORGIA
<b>GF</b>	FRENCH GUIANA
<b>GH</b>	GHANA
<b>GI</b>	GIBRALTAR
<b>GL</b>	GREENLAND
<b>GM</b>	GAMBIA
<b>GN</b>	GUINEA
<b>GP</b>	GUADELOUPE
<b>GQ</b>	EQUATORIAL GUINEA
<b>GR</b>	GREECE
<b>GS</b>	SOUTH GEORGIA AND THE SOUTH SANDWICH ISLANDS
<b>GT</b>	GUATEMALA
<b>GU</b>	GUAM
<b>GW</b>	GUINEA-BISSAU
<b>GY</b>	GUYANA
<b>HK</b>	HONG KONG
<b>HM</b>	HEARD ISLAND AND MCDONALD ISLANDS
<b>HN</b>	HONDURAS

**eSLOG 2.0 - Elektronsko naročilo**

HR	CROATIA
HT	HAITI
HU	HUNGARY
ID	INDONESIA
IE	IRELAND
IL	ISRAEL
IN	INDIA
IO	BRITISH INDIAN OCEAN TERRITORY
IQ	IRAQ
IR	IRAN, ISLAMIC REPUBLIC OF
IS	ICELAND
IT	ITALY
JM	JAMAICA
JO	JORDAN
JP	JAPAN
KE	KENYA
KG	KYRGYZSTAN
KH	CAMBODIA
KI	KIRIBATI
KM	COMOROS
KN	SAINT KITTS AND NEVIS
KP	KOREA, DEMOCRATIC PEOPLE'S REPUBLIC OF
KR	KOREA, REPUBLIC OF
KW	KUWAIT
KY	CAYMAN ISLANDS
KZ	KAZAKSTAN
LA	LAO PEOPLE'S DEMOCRATIC REPUBLIC
LB	LEBANON
LC	SAINT LUCIA
LI	LIECHTENSTEIN
LK	SRI LANKA
LR	LIBERIA
LS	LESOTHO
LT	LITHUANIA
LU	LUXEMBOURG
LV	LATVIA
LY	LIBYAN ARAB JAMAHIRIYA
MA	MOROCCO

<b>MC</b>	MONACO
<b>MD</b>	MOLDOVA, REPUBLIC OF
<b>MG</b>	MADAGASCAR
<b>MH</b>	MARSHALL ISLANDS
<b>MK</b>	MACEDONIA, THE FORMER YUGOSLAV REPUBLIC OF
<b>ML</b>	MALI
<b>MM</b>	MYANMAR
<b>MN</b>	MONGOLIA
<b>MO</b>	MACAU
<b>MP</b>	NORTHERN MARIANA ISLANDS
<b>MQ</b>	MARTINIQUE
<b>MR</b>	MAURITANIA
<b>MS</b>	MONTSERRAT
<b>MT</b>	MALTA
<b>MU</b>	MAURITIUS
<b>MV</b>	MALDIVES
<b>MW</b>	MALAWI
<b>MX</b>	MEXICO
<b>MY</b>	MALAYSIA
<b>MZ</b>	MOZAMBIQUE
<b>NA</b>	NAMIBIA
<b>NC</b>	NEW CALEDONIA
<b>NE</b>	NIGER
<b>NF</b>	NORFOLK ISLAND
<b>NG</b>	NIGERIA
<b>NI</b>	NICARAGUA
<b>NL</b>	NETHERLANDS
<b>NO</b>	NORWAY
<b>NP</b>	NEPAL
<b>NR</b>	NAURU
<b>NU</b>	NIUE
<b>NZ</b>	NEW ZEALAND
<b>OM</b>	OMAN
<b>PA</b>	PANAMA
<b>PE</b>	PERU
<b>PF</b>	FRENCH POLYNESIA
<b>PG</b>	PAPUA NEW GUINEA
<b>PH</b>	PHILIPPINES

**eSLOG 2.0 - Elektronsko naročilo**

<b>PK</b>	PAKISTAN
<b>PL</b>	POLAND
<b>PM</b>	SAINT PIERRE AND MIQUELON
<b>PN</b>	PITCAIRN
<b>PR</b>	PUERTO RICO
<b>PS</b>	PALESTINIAN TERRITORY, OCCUPIED
<b>PT</b>	PORTUGAL
<b>PW</b>	PALAU
<b>PY</b>	PARAGUAY
<b>QA</b>	QATAR
<b>RE</b>	REUNION
<b>RO</b>	ROMANIA
<b>RS</b>	SERBIA
<b>RU</b>	RUSSIAN FEDERATION
<b>RW</b>	RWANDA
<b>SA</b>	SAUDI ARABIA
<b>SB</b>	SOLOMON ISLANDS
<b>SC</b>	SEYCHELLES
<b>SD</b>	SUDAN
<b>SE</b>	SWEDEN
<b>SG</b>	SINGAPORE
<b>SH</b>	SAINT HELENA
<b>SI</b>	SLOVENIA
<b>SJ</b>	SVALBARD AND JAN MAYEN
<b>SK</b>	SLOVAKIA
<b>SL</b>	SIERRA LEONE
<b>SM</b>	SAN MARINO
<b>SN</b>	SENEGAL
<b>SO</b>	SOMALIA
<b>SR</b>	SURINAME
<b>ST</b>	SAO TOME AND PRINCIPE
<b>SV</b>	EL SALVADOR
<b>SY</b>	SYRIAN ARAB REPUBLIC
<b>SZ</b>	SWAZILAND
<b>TC</b>	TURKS AND CAICOS ISLANDS
<b>TD</b>	CHAD
<b>TF</b>	FRENCH SOUTHERN TERRITORIES
<b>TG</b>	TOGO



TH	THAILAND
TJ	TAJIKISTAN
TK	TOKELAU
TM	TURKMENISTAN
TN	TUNISIA
TO	TONGA
TP	EAST TIMOR
TR	TURKEY
TT	TRINIDAD AND TOBAGO
TV	TUVALU
TW	TAIWAN, PROVINCE OF CHINA
TZ	TANZANIA, UNITED REPUBLIC OF
UA	UKRAINE
UG	UGANDA
UM	UNITED STATES MINOR OUTLYING ISLANDS
US	UNITED STATES
UY	URUGUAY
UZ	UZBEKISTAN
VA	HOLY SEE (VATICAN CITY STATE)
VC	SAINT VINCENT AND THE GRENADINES
VE	VENEZUELA
VG	VIRGIN ISLANDS, BRITISH
VI	VIRGIN ISLANDS, U.S.
VN	VIET NAM
VU	VANUATU
WF	WALLIS AND FUTUNA
WS	SAMOA
YE	YEMEN
YT	MAYOTTE
YU	YUGOSLAVIA
ZA	SOUTH AFRICA
ZM	ZAMBIA
ZW	ZIMBABWE

### 3227 Location function code qualifier

Code	Code name/description
------	-----------------------

## eSLOG 2.0 - Elektronsko naročilo

1	Place of terms of delivery (3018) Point or port of departure, shipment or destination, as required under the applicable terms of delivery, e.g. Incoterms.
---	---

### 4053 Delivery or transport terms description code

Code	Code name/description
CIF	Cost, Insurance, Freight to named destination

### 4055 Delivery or transport terms function code

Code	Code name/description
6	Delivery condition Specifies the conditions under which the goods must be delivered to the consignee.

### 4183 Special condition code

Code	Code name/description
148	Supply direct delivery Goods to be supplied direct delivery to the delivery store and not through a distribution centre or a warehouse.

### 4277 Payment terms description identifier

Code	Code name/description
1	Draft(s) drawn on issuing bank Draft(s) must be drawn on the issuing bank.
2	Draft(s) drawn on advising bank Draft(s) must be drawn on the advising bank.
3	Draft(s) drawn on reimbursing bank Draft(s) must be drawn on the reimbursing bank.
4	Draft(s) drawn on applicant Draft(s) must be drawn on the applicant.
5	Draft(s) drawn on any other drawee Draft(s) must be drawn on any other drawee.
6	No drafts No drafts required.
ZZZ	Mutually defined (GS1 Temporary Code) A code identifying mutually defined payment terms.

### 4279 Payment terms type code qualifier

Code	Code name/description
1	Basic Payment conditions normally applied.

22	Discount Payment terms on which discounts are applicable.
----	--

**4347 Product identifier code qualifier**

Code	Code name/description
1	Additional identification Information which specifies and qualifies product identifications.
2	Identification for potential substitution The item number describes the potential substitute product.
5	Product identification The item number is for product identification.

**4441 Free text value code**

Code	Code name/description
78E	Proof Of Delivery (GS1 Permanent Code) The mentioned URL refers to a Proof of Delivery document.

**4451 Text subject code qualifier**

Code	Code name/description
ACD	Reason Reason for a request or response.
ADK	Promotion information The text contains information about a promotion.
DIN	Delivery instructions Instructions regarding the delivery of the cargo.
PUR	Purchasing information Note contains purchasing information.
ZZZ	Mutually defined Note contains information mutually defined by trading partners.

**5025 Monetary amount type code qualifier**

Code	Code name/description
52	Discount amount The amount specified is the discount amount.
79	Total line items amount The sum of all the line item amounts.
86	Message total monetary amount The total of all monetary amounts contained within the message.
125	Taxable amount Amount on which a tax has to be applied.
176	Message total duty/tax/fee amount Total of all duty/tax/fee amounts.

<b>203</b>	Line item amount Goods item total minus allowances plus charges for line item. See also Code 66.
<b>259</b>	Total charges Self-explanatory.
<b>260</b>	Total allowances Self-explanatory.

**5125 Price code qualifier**

Code	Code name/description
<b>AAA</b>	Calculation net The price stated is the net price including allowances/ charges. Allowances/charges may be stated for information only.
<b>AAB</b>	Calculation gross The price stated is the gross price to which allowances/charges, if valid, must be applied.
<b>AAE</b>	Information price, excluding allowances or charges, including taxes The price stated is for information purposes only and excludes all allowances and charges. Taxes however are included in the price.
<b>AAF</b>	Information price, excluding allowances or charges and taxes The price stated is for information purposes only and excludes all allowances, charges and taxes.
<b>INF</b>	Information The price is provided for information.

**5387 Price specification code**

Code	Code name/description
<b>DPR</b>	Discount price A reduction from the usual list value.
<b>DR</b>	Dealer price Code specifying a dealer price.
<b>INV</b>	Invoice price Price per unit of quantity of a product as specified on an invoice.
<b>LBL</b>	Labelling price Retail price of the buyer that should be printed by the producer on the article's label. The labelling price is not necessary the effective retail price.
<b>PRP</b>	Promotional price The value that is placed on an item that is being developed. The idea is to sell this product for less than one normally would, and make up for it by selling a larger quantity.
<b>RTP</b>	Retail price Price per unit of quantity of a product to be used for retail.

**6063 Quantity type code qualifier**

Code	Code name/description
<b>21</b>	Ordered quantity The quantity which has been ordered.

59	Number of consumer units in the traded unit Number of units for consumer sales in a unit for trading.
----	--

## 6069 Control total type code qualifier

Code	Code name/description
1	Total value of the quantity segments at line level in a message Self-explanatory.
2	Number of line items in message Self-explanatory.
7	Total gross weight Code to indicate total gross weight of a consignment.
10	Total number of consignments The total number of consignments.
11	Total number of packages Total number of packages of the entire consignment.
15	Total consignment, cube The total cube of consignment.
16	Total number of equipment Total number of equipment mentioned in the message.
26	Total gross measurement/cube Total gross cubic measurement of the goods, including packing but excluding transport equipment.
27	Total number of credit items given for control purposes Total number of credit items given for control purposes.
28	Total number of debit items given for control purposes Total number of debit items given for control purposes.
29	Total net weight of consignment A code to indicate the total net weight of a consignment.
30	Total number of empty containers The total number of empty containers mentioned in the message.
31	Number of messages Control count of the number of messages referenced.
40	Total number of sequence details in message The total number of sequence details in the message.
47	Total wholesaler unsold quantity Total quantity of unsold goods held by the wholesaler.
48	Total quantity held by delivery vehicles Total quantity held by the delivery vehicles.
49	Total quantity held by retail outlets Total quantity held by the retail outlets.
50	Total rejected return quantity The total quantity for return which have been rejected.
51	Number of goods items in the message The total number of goods items in a message.
56	Total number of transport units Number of separate units of cargo handled during transportation of a consignment.

## eSLOG 2.0 - Elektronsko naročilo

<b>57</b>	Total loading metres The total number of loading metres.
<b>31E</b>	Number of premises (GS1 CTemporary ode) A code to indicate the total number of premises detailed in the message.
<b>36E</b>	Number of meters (GS1 Temporary Code) The total number of meters within premises.
<b>38E</b>	Total number of transport units (GS1 Temporary Code) The total number of transport units (packages) contained in a consignment.

### 6311 Measurement purpose code qualifier

Code	Code name/description
<b>PD</b>	Physical dimensions (product ordered) Specified measurement dimensions refer to physical dimensions of a product, material or package.

### 6313 Measured attribute code

Code	Code name/description
<b>DI</b>	Diameter Diameter of an article.
<b>HT</b>	Height dimension Numeric value of height.
<b>LN</b>	Length dimension (6168) Length of pieces or packages stated for transport purposes.
<b>WD</b>	Width dimension Numeric value of width.

### 6343 Currency type code qualifier

Code	Code name/description
<b>4</b>	Invoicing currency The name or symbol of the monetary unit used for calculation in an invoice.
<b>9</b>	Order currency The name or symbol of the monetary unit used in an order.

### 6345 Currency identification code

Code	Code name/description
<b>EUR</b>	Euro

### 6347 Currency usage code qualifier

Code	Code name/description
------	-----------------------

1	Charge payment currency The currency in which charges are to be paid.
2	Reference currency The currency applicable to amounts stated. It may have to be converted.
3	Target currency The currency which should be used to the target destination of the transaction.

## 6411 Measurement unit code

Code	Code name/description
001	Barrel (205 litres, 45 gallons) (GS1 Temporary Code)
002	Degree days (GS1 Temporary Code)
003	Gigacaloric (GS1 Temporary Code)
04	small spray
23	gram per cubic centimetre
25	gram per square centimetre
28	kilogram per square metre
37	ounce per square foot
59	part per million
64	Pound per square inch, gauge A unit of measure expressed in pound per square inch
2N	decibel
2X	metre per minute
4K	milliampere
4L	megabyte
4O	microfarad
4P	newton per metre
A25	cheval vapeur
A86	gigahertz
A99	Bit A unit of information equal to one binary digit.
ACR	acre
AD	byte
AMH	ampere hour
AMP	ampere
AMT	Amount (GS1 Temporary Code) A measurement of monetary amount.
ANN	year
APX	Troy ounce (31.10348 g) (GS1 Temporary Code)
APZ	Troy ounce or apothecary ounce
ASM	alcoholic strength by mass

<b>ASU</b>	alcoholic strength by volume
<b>AV</b>	capsule
<b>B13</b>	Joule per square metre A unit of measure of heat energy expressed in joule per square metre.
<b>B17</b>	Credit A unit of count defining the number of entries made to the credit side of an account.
<b>BAR</b>	bar
<b>BTU</b>	British thermal unit
<b>C0</b>	call
<b>C60</b>	ohm centimetre
<b>C79</b>	Kilovolt Ampere Hour A unit of accumulated energy of 1000 volt amperes over a period of one hour.
<b>CDL</b>	candela
<b>CEL</b>	degree celsius
<b>CF2</b>	Colony forming unit per gram (GS1 Temporary Code) Colony forming units per gram is a unit of measure for micro-organisms, such as bacteria, in a food item. Micro-organisms form colonies that are be counted under determined conditions
<b>CLT</b>	centilitre
<b>CMK</b>	square centimetre
<b>CMQ</b>	cubic centimetre
<b>CMT</b>	centimetre
<b>D19</b>	Square metre kelvin per watt Unit of measure of thermal insulance expressed in square metre kelvin per watt.
<b>D21</b>	square metre per kilogram
<b>D32</b>	Terawatt hour A unit of measure expressed in terawatt hour
<b>D5</b>	Kilogram per square centimetre A unit of measure expressed in kilogram per square centimetre
<b>D55</b>	Watt per square metre kelvin Unit of measure of thermal conductance expressed in watt per square metre kelvin.
<b>D68</b>	Number of Words A unit of count defining the number of words.
<b>DAY</b>	day
<b>DD</b>	degree
<b>DMQ</b>	cubic decimetre
<b>DMT</b>	decimetre
<b>DOS</b>	Dose (GS1 Temporary Code) An amount of medicine, etc administered at one time.
<b>DRG</b>	Dragée (GS1 Temporary Code) Number of dragées (coated tablets) contained in the item's package as a measurement unit.
<b>DZN</b>	dozen
<b>E09</b>	Milliampere hour A unit of power load delivered at the rate of one thousandth of an ampere over a period of one hour.



<b>E10</b>	Degree day A unit of measure used in meteorology and engineering to measure the demand for heating or cooling over a given period of days.
<b>E11</b>	Gigacalorie A unit of heat energy equal to one thousand million calories.
<b>E27</b>	Dose A unit of count defining the number of doses (dose: a definite quantity of a medicine or drug).
<b>E31</b>	Square metre per litre A unit of count defining the number of square metres per litre.
<b>E32</b>	Litre per hour A unit of count defining the number of litres per hour.
<b>E34</b>	Gigabyte A unit of information equal to 10 E9 bytes.
<b>E37</b>	Pixel A unit of count defining the number of pixels (pixel: picture element).
<b>E38</b>	Megapixel A unit of count equal to 10 E6 (1000000) pixels (picture elements).
<b>E39</b>	Dots per inch A unit of information defining the number of dots per linear inch as a measure of the resolution or sharpness of an image.
<b>EA</b>	each
<b>EV</b>	envelope
<b>FAH</b>	degree Fahrenheit
<b>FOT</b>	foot
<b>FP</b>	Pound per square foot A unit of measure expressed in pound per square foot
<b>FTK</b>	Square foot A unit of measure expressed in square foot
<b>FTQ</b>	cubic foot
<b>GL</b>	gram per litre
<b>GLI</b>	gallon (UK)
<b>GM</b>	gram per square metre
<b>GRM</b>	gram
<b>GRO</b>	gross
<b>GV</b>	gigajoule
<b>GWH</b>	gigawatt hour
<b>H87</b>	Piece A unit of count defining the number of pieces (piece: a single item, article or exemplar).
<b>HLT</b>	hectolitre
<b>HMT</b>	hectometre A unit of linear measure equal to 10 E2 metres.
<b>HTZ</b>	hertz
<b>HUR</b>	hour
<b>INH</b>	inch

## eSLOG 2.0 - Elektronsko naročilo

<b>INK</b>	Square inch A unit of measure expressed in square inch
<b>JM</b>	Megajoule per cubic metre
<b>JOU</b>	joule
<b>K51</b>	Kilocalorie (mean)
<b>KAH</b>	Kilovolt Ampere Hour (GS1 Temporary Code) A unit of measure expressed in Kilovolt Ampere Hour.
<b>KB</b>	kilocharacter
<b>KBA</b>	kilobar
<b>KCL</b>	Kilocalorie (GS1 Temporary Code) Unit of measure for the calorific value of the item (= 1000 cal).
<b>KEL</b>	kelvin
<b>KGM</b>	kilogram
<b>KHZ</b>	kilohertz
<b>KJO</b>	kilojoule
<b>KL</b>	kilogram per metre
<b>KMH</b>	kilometre per hour
<b>KMQ</b>	kilogram per cubic metre
<b>KPA</b>	kilopascal
<b>KTM</b>	kilometre
<b>KVA</b>	kilovolt - ampere
<b>KVT</b>	kilovolt
<b>KWH</b>	kilowatt hour
<b>KWT</b>	kilowatt
<b>L2</b>	litre per minute
<b>LBR</b>	Pound
<b>LD</b>	Litre per day A unit of measure defining the number of litres per day.
<b>LIH</b>	Litre per hour (GS1 Temporary Code) Unit of measure expressed in litre per hour.
<b>LNE</b>	Printed line count (GS1 Temporary Code) The indication of the count of printed lines included on a paper communication (e.g. telegram) for invoicing purposes.
<b>LTR</b>	litre
<b>LUX</b>	lux
<b>M4</b>	Monetary value A unit of measure expressed as a monetary amount.
<b>MAL</b>	mega litre
<b>MAW</b>	megawatt
<b>MC</b>	microgram
<b>MCU</b>	millicurie
<b>MGM</b>	milligram

<b>MHZ</b>	megahertz
<b>MIN</b>	minute
<b>MLT</b>	millilitre
<b>MMK</b>	square millimetre
<b>MMQ</b>	cubic millimetre
<b>MMT</b>	millimetre
<b>MON</b>	month
<b>MPA</b>	megapascal
<b>MQH</b>	Cubic metre per hour A unit of measure defining the number of cubic metres per hour.
<b>MTA</b>	Micro farad (GS1 Temporary Code) One millionth of a farad. A farad is the capacitance of a capacitor between the plates of which a potential of 1 volt is created by a charge of 1 Coulomb.
<b>MTK</b>	square metre
<b>MTQ</b>	cubic metre
<b>MTR</b>	metre
<b>MTS</b>	Metre per second A unit of speed expressed in metres per second.
<b>MWH</b>	megawatt hour (1000 kW.h)
<b>NAR</b>	number of articles
<b>NEW</b>	newton
<b>NIU</b>	number of international units A unit of count defining the number of international units.
<b>NRL</b>	number of rolls
<b>ONZ</b>	ounce
<b>OZA</b>	fluid ounce (US)
<b>OZI</b>	fluid ounce (UK)
<b>P1</b>	percent
<b>PA</b>	packet
<b>PAL</b>	pascal
<b>PCE</b>	Piece (GS1 Temporary Code)
<b>PF</b>	pallet (lift)
<b>PND</b>	Pound (GS1 Temporary Code)
<b>PR</b>	pair
<b>PTI</b>	pint (UK)
<b>PTN</b>	Portion (GS1 Temporary Code) The identification of the number of portions (doses in medical terms) into which a complete product may be broken into for serving purposes, e.g. a pie with 6 portions, a liquid medicine with 20 doses.
<b>QAN</b>	quarter (of a year)
<b>QTI</b>	quart (UK)

## eSLOG 2.0 - Elektronsko naročilo

<b>RJH</b>	Decanewton (GS1 Temporary Code) A unit of force equal to 10 Newton.
<b>RPM</b>	revolutions per minute
<b>RTO</b>	Ratio (GS1 Temporary Code)
<b>SEC</b>	second
<b>SMI</b>	Mile (statute mile) A unit of measure expressed in mile
<b>SML</b>	Square metre per litre (GS1 Temporary Code) Unit of measure expressed in square metre per litre.
<b>ST</b>	sheet
<b>TNE</b>	tonne (metric ton)
<b>U2</b>	tablet A unit of count defining the number of tablets (tablet: a small flat or compressed solid object).
<b>UI</b>	Unit of activity, predefined (GS1 Temporary Code) A measure pertaining to a predefined activity.
<b>VI</b>	vial
<b>VLТ</b>	volt
<b>WHR</b>	watt hour
<b>WRD</b>	Word (GS1 Temporary Code) The specification of a word as a measurement unit, e.g. 21 words in a telex.
<b>WTT</b>	watt
<b>YDK</b>	Square yard A unit of measure expressed in square yard
<b>YRD</b>	yard
<b>ZE</b>	Milliampere hour (GS1 Temporary Code) A practical unit of quantity of electricity; the quantity that flows in one hour through a conductor carrying a current of 1 Ampere. 1 Ampere-hour is the equivalent to 36000 Coulombs.
<b>ZP</b>	page

### 7009 Item description code

Code	Code name/description
<b>CU</b>	Consumer unit (GS1 Permanent Code) The package size of a product or products agreed by trading partners as the size sold at the retail point of sale.
<b>TU</b>	Traded unit (GS1 Permanent Code) The package size of a product or products which has been agreed by trading partners as the size which may be ordered, delivered and invoiced.

### 7077 Description format code

Code	Code name/description
<b>C</b>	Code (from industry code list) Description of an item in coded format.

<b>F</b>	Free-form Description of an item in free form text.
----------	--

## 7143 Item type identification code

Code	Code name/description
<b>GB</b>	Buyer's internal product group code Product group code used within a buyer's internal systems.
<b>IN</b>	Buyer's item number The item number has been allocated by the buyer.
<b>SA</b>	Supplier's article number Number assigned to an article by the supplier of that article.
<b>SRV</b>	GS1 Global Trade Item Number A unique number, up to 14-digits, assigned according to the numbering structure of the GS1 system. 'GS1' stands for the 'Global Standards One'.
<b>SUE</b>	GS1 Global Returnable Asset Identifier, non-serialised A unique, 13-digit number assigned according to the numbering structure of the GS1 system and used to identify a type of Reusable Transport Item (RTI).

## 7405 Object identification code qualifier

Code	Code name/description
<b>BX</b>	Batch number Unique number affixed by manufacturer to a batch of products produced under similar conditions.

## 8051 Transport stage code qualifier

Code	Code name/description
<b>20</b>	Main-carriage transport The primary stage in the movement of cargo from the point of origin to the intended destination.

## 8067 Transport mode name code

Code	Code name/description
<b>10</b>	Maritime transport This code should be used whenever the transport vehicle completes any part of its journey by sea.
<b>20</b>	Rail transport
<b>30</b>	Road transport
<b>40</b>	Air transport
<b>50</b>	Mail (Actual mode of transport unknown) - This code is provided for practical reasons, despite the fact that mail is not a genuine mode of transport. In many countries, the value of merchandise exported by mail is considerable, but the exporter or importer concerned would be unable to state by which mode postal items had passed the national border.

<b>60</b>	Multimodal transport This code is used when goods are carried to their destination by at least two different modes on the basis of one transport contract. (Local pick-up and delivery of goods out in the performance of a unimodal transport contract shall not be considered as multimodal transport.)
<b>100</b>	Courier service (GS1 Temporary Code) A courier service used to collect and deliver a consignment to its destination.

## 8179 Transport means description code

Code	Code name/description
<b>1</b>	Barge chemical tanker A barge equipped to transport liquid chemicals.
<b>9</b>	Exceptional transport Transport for which common characteristics are not applicable (e.g. big transformers requiring special wagons, special tackles, special routing etc.).
<b>12</b>	Ship tanker A large vessel equipped to transport liquids.
<b>13</b>	Ocean vessel
<b>19</b>	Tip-up truck A truck capable of tipping up in order to deliver its load.
<b>20</b>	Furniture truck A truck used explicitly for the conveyance of furniture.
<b>21</b>	Rail tanker A rail wagon equipped to transport liquids.
<b>22</b>	Rail silo tanker Self explanatory.  Notes: This code value will be removed effective with directory D.04B.
<b>23</b>	Rail bulk car A rail wagon equipped to transport bulk cargo.
<b>25</b>	Rail express Description to be provided.  Notes: This code value will be removed effective with directory D.04B.
<b>26</b>	Tip-up articulated truck An articulated truck capable of tipping up in order to deliver its load.
<b>28</b>	Refrigerated truck and trailer A combined truck and trailer equipped to maintain refrigerated temperatures.
<b>29</b>	Freezer truck and trailer A combined truck and trailer equipped to maintain freezing temperatures.
<b>30</b>	Tautliner 25 tonne, combined with 90 cubic meter trailer with removable roof A truck with non-ridged sides, 25 tonne capacity combined with a 90 cubic meter trailer with removable roof.
<b>31</b>	Truck An automotive vehicle for hauling goods.
<b>32</b>	Road tanker An over-the-road tank truck or trailer.
	Road silo tanker

33	Description to be provided.  Notes: This code value will be removed effective with directory D.04B.
35	Truck/trailer with tilt A truck and trailer combination with a tilting capability.
40	Truck with opening floor A truck with an opening floor mechanism which is used to discharge the cargo.
41	Freezer truck A truck equipped to maintain freezing temperatures.
42	Isothermic truck A truck equipped to maintain controlled temperatures.
43	Refrigerated truck A truck equipped to maintain refrigerated temperatures.
44	Freezer van A small rigid covered vehicle for conveying frozen goods.
45	Isothermic van A small rigid covered vehicle for conveying temperature controlled goods.
46	Refrigerated van A small rigid covered vehicle for conveying refrigerated goods.
47	Bulk truck A truck suitable for transporting bulk goods.
48	Van A small vehicle suitable for carrying small volume loads.
73	Train with more than one and less than 20 wagons A train with more than one and less than 20 wagons used to carry goods.
74	Train with 20 or more wagons A train with 20 or more wagons used to carry goods.
77	Freezer truck and isothermic trailer A combined freezer truck and isothermic trailer.
78	Isothermic truck and isothermic trailer A truck and a trailer equipped to maintain controlled temperatures.
79	Refrigerated truck and isothermic trailer A combined refrigerated truck and isothermic trailer.
80	Freezer truck and refrigerated trailer A combined freezer truck and refrigerated trailer.
81	Isothermic truck and refrigerated trailer A combined isothermic truck and refrigerated trailer.
82	Rigid truck with tank and tank trailer A combined rigid truck with tank and tank trailer.
83	Bulk truck and tank trailer A combined truck capable of carrying liquids or bulk goods and a tank trailer.
84	Rigid truck with tank and bulk trailer A combined rigid truck with tank and a trailer capable of carrying liquids or bulk goods.
85	Bulk truck and bulk trailer A combined truck and a trailer both capable of carrying liquids or bulk goods.
86	Tautliner truck and extendable trailer A combined tautliner truck and extendable trailer.

87	Tautliner truck with removable roof and extendable trailer A combined tautliner truck with removable roof and extendable trailer.
88	Truck with opening floor and extendable trailer A combined truck with opening floor and extendable trailer.
89	Bulk truck and extendable trailer A combined truck capable of carrying liquids or bulk goods and an extendable trailer.
90	Isothermic truck and freezer trailer A combined isothermic truck and freezer trailer.
91	Refrigerated truck and freezer trailer A combined refrigerated truck and freezer trailer.
92	Tip-up truck and gondola trailer A combined tip-up truck and gondola trailer. A gondola trailer is a split level trailer suitable for the transport of heavy machinery.
93	Tautliner truck and gondola trailer A combined tautliner truck and gondola trailer. A gondola trailer is a split level trailer suitable for the transport of heavy machinery.
94	Tautliner truck with removable roof and gondola trailer A combined tautliner truck with removable roof and gondola trailer. A gondola trailer is a split level trailer suitable for the transport of heavy machinery.
95	Truck with opening floor and gondola trailer A combined truck with opening floor and gondola trailer. A gondola trailer is a split level trailer suitable for the transport of heavy machinery.
96	Bulk truck and gondola trailer A combined truck capable of carrying liquids or bulk goods and a gondola trailer. A gondola trailer is a split level trailer suitable for the transport of heavy machinery.
97	Tip-up truck and extendable gondola trailer A combined tip-up truck with extendable gondola trailer. An extendable gondola trailer is a trailer fitted with a rear axle which can be extended to cater for variable length and is suitable for the transport of heavy machinery.
98	Tautliner truck and extendable gondola trailer A combined tautliner truck and extendable gondola trailer. An extendable gondola trailer is a trailer fitted with a rear axle which can be extended to cater for variable length and is suitable for the transport of heavy machinery.
99	Tautliner truck with removable roof and extendable gondola trailer A combined tautliner truck with removable roof and extendable gondola trailer. An extendable gondola trailer is a trailer fitted with a rear axle which can be extended to cater for variable length and is suitable for the transport of heavy machinery.
100	Truck with opening floor and extendable gondola trailer A combined truck with opening floor and extendable gondola trailer. An extendable gondola trailer is a trailer fitted with a rear axle which can be extended to cater for variable length and is suitable for the transport of heavy machinery.
101	Bulk truck and extendable gondola trailer A combined truck capable of carrying liquids or bulk goods and a extendable gondola trailer. An extendable gondola trailer is a trailer fitted with a rear axle which can be extended to cater for variable length and is suitable for the transport of heavy machinery.
102	Tip-up truck and trailer with opening floor A combined tip-up truck and trailer with opening floor.
103	Tautliner truck and trailer with opening floor A combined tautliner truck and trailer with opening floor.
104	Tautliner truck with removable roof and trailer with opening floor A combined tautliner truck with removable roof and trailer with opening floor.



<b>106</b>	Bulk truck and trailer with opening floor A combined truck capable of carrying liquids or bulk goods and a trailer with opening floor.
<b>3138</b>	Armoured vehicle Automotive vehicle designed with fortified body for enhanced protection.
<b>10E</b>	Tautliner 25t (GS1 Temporary Code)
<b>11E</b>	Tautliner 25t with removable roof (GS1 Temporary Code)
<b>12E</b>	Articulated flat lorry 25t (GS1 Temporary Code) An articulated flat lorry capable of carrying loads of 25 tonnes.
<b>13E</b>	Articulated flat lorry 24t with crane 10m (GS1 Temporary Code) An articulated flat lorry with a 10 meter crane capable of carrying loads of 24 tonnes.
<b>14E</b>	Articulated flat lorry 24t with crane 15m (GS1 Temporary Code) An articulated flat lorry with a 15 meter crane capable of carrying loads of 24 tonnes.
<b>15E</b>	Articulated flat lorry 24t with crane 18m (GS1 Temporary Code) An articulated flat lorry with a 18 meter crane capable of carrying loads of 24 tonnes.
<b>16E</b>	Articulated flat lorry 10t (GS1 Temporary Code) An articulated flat lorry capable of carrying loads of 10 tonnes.
<b>17E</b>	Tautliner 25t with trailer 90m3 (GS1 Temporary Code)
<b>18E</b>	Tautliner 25t with trailer 120m3 (GS1 Temporary Code)
<b>19E</b>	Flat lorry with trailer and crane 10m (GS1 Temporary Code) An flat lorry with a trailer and a 10 meter crane.
<b>20E</b>	Articulated lorry with tank (GS1 Temporary Code) An articulated lorry fitted with a tank capable of carrying liquids or bulk goods..
<b>21E</b>	Flat lorry 15t (GS1 Temporary Code) A flat lorry capable of carrying loads of 15 tonnes.
<b>22E</b>	Flat lorry 25t with crane (GS1 Temporary Code) An flat lorry fitted with a crane and capable of carrying loads of 25 tonnes.
<b>27E</b>	Isothermic trailer (GS1 Temporary Code) A trailer capable of transporting temperature controlled goods.

28E	Refrigerated trailer (GS1 Temporary Code) A trailer capable of transporting refrigerated goods.
32E	Trailer (GS1 Temporary Code) A trailer suitable for transporting containerised or palletized goods.
33E	Tank trailer (GS1 Temporary Code) A tank trailer suitable for transporting liquids.
34E	Bulk trailer (GS1 Temporary Code) A trailer suitable for transporting bulk goods.
37E	Extendable trailer (GS1 Temporary Code) A trailer fitted with a rear axle which can be extended to cater for variable length loads.
38E	Dolly trailer (GS1 Temporary Code) A trailer composed of a platform mounted on an axle. The trailer is not connected directly to the truck but connected by the load.
39E	Freezer trailer (GS1 Temporary Code) A trailer suitable for transporting frozen goods.
41E	Furniture removal trailer (GS1 Temporary Code) A trailer used explicitly for the removal of furniture.
44E	Gondola trailer (GS1 Temporary Code) A split level trailer suitable for the transport of heavy machinery (e.g. earth movers).
45E	Extendable gondola trailer (GS1 Temporary Code) A trailer fitted with a rear axle which can be extended to cater for variable length loads and is suitable for the transport of heavy machinery (e.g. earth movers).
46E	Rigid lorry with tank (GS1 Temporary Code) A rigid lorry fitted with a tank capable of carrying liquids or bulk goods.
50E	Tautliner rigid truck (GS1 Temporary Code)
51E	Tautliner rigid truck with removable roof (GS1 Temporary Code)
53E	Trailer with opening floor (GS1 Temporary Code) A trailer with an opening floor mechanism which is used to discharge the cargo.
54E	Train with convergent set of wagons (GS1 Temporary Code) A train with wagons coming from different despatch locations which must be grouped in order to form one train.
55E	Train with divergent set of wagons (GS1 Temporary Code) A train with wagons coming from the same dispatch location which will be split in different trains because there are more than one point of delivery.
56E	Combination of a truck (length 6 m) and a trailer (length 8 m) (GS1 Temporary Code) Combination of a truck (length 6 m) and a trailer (length 8m) having a combined tonnage of between 23 and 25 tons and a loading capacity of 90m <sup>3</sup> .
57E	Combination of a truck (length 6 m) and a trailer (length 9 m) (GS1 Temporary Code) Combination of a truck (length 6m) and a trailer (length 9m) having a combined tonnage of between 23 and 25 tons and a loading capacity of 100m <sup>3</sup> .
58E	Combination of a truck and trailer with a length of 13.6m, a tonnage between 23 and 25 tons (GS1 Temporary Code)
	Combination of a truck and a trailer with a length of 13.6m, a tonnage between 23 and 25 tons, and a loading capacity of 80 m <sup>3</sup> .
59E	Rail wagon (GS1 Temporary Code) A single rail wagon used to carry goods.
77E	Furniture truck and trailer (GS1 Temporary Code) A combined truck and trailer capable of carrying furniture.
78E	Tautliner truck and furniture trailer (GS1 Temporary Code) A combined tautliner truck and furniture trailer.

<b>79E</b>	Tautliner truck with removable roof and furniture trailer (GS1 Temporary Code) A combined .tautliner truck with removable roof and furniture trailer.
<b>93E</b>	Truck and trailer with opening floor (GS1 Temporary Code) A combined truck and a trailer with an opening floor.
<b>95E</b>	Tautliner truck and dolly trailer (GS1 Temporary Code) A combined tautliner truck and a dolly trailer.
<b>96E</b>	A tautliner truck with removable roof and a dolly trailer (GS1 Temporary Code) A combined tautliner truck with removable roof and a dolly trailer.
<b>97E</b>	Truck with trailer (GS1 Temporary Code) Combined truck and trailer.
<b>98E</b>	Truck with crane for moving goods without trailer (GS1 Temporary Code) A truck with a crane that enables to move goods, without trailer.
<b>99E</b>	Truck with crane for moving goods with trailer (GS1 Temporary Code) A truck with a crane that enables to move goods, with trailer.
<b>X01</b>	Truck with crane for lifting goods without trailer (GS1 Temporary Code) A truck with a crane that enables to lift goods, without trailer.
<b>X02</b>	Truck with crane for lifting goods with trailer (GS1 Temporary Code) A truck with a crane that enables to lift goods, with trailer.
<b>X04</b>	Courier express (GS1 Temporary Code) Use the fastest courier means possible.
<b>X05</b>	Road parcel express (GS1 Temporary Code) Parcel express service by road.
<b>X06</b>	Air freight (GS1 Temporary Code)
<b>X07</b>	Surface air lifting (GS1 Temporary Code)
<b>X08</b>	Air express (GS1 Temporary Code)
<b>X09</b>	Parcel post (GS1 Temporary Code) Postal service for the delivery of parcels.
<b>X10</b>	Mail express (GS1 Temporary Code) The express mail service of the postal service.
<b>X11</b>	Surface mail (GS1 Temporary Code) For non air mail international mailing.
<b>X12</b>	Accelerated surface mail (GS1 Temporary Code) Higher priority surface mail.
<b>X13</b>	Air mail (GS1 Temporary Code) Use air mail service.
<b>X14</b>	Printed matter/book post (GS1 Temporary Code) A special mailing service for printed matter or books.
<b>X3</b>	Truck up to 3,5 tons (GS1 Temporary Code) A truck with a total weight up to 3,5 tons.
<b>X4</b>	Miscellaneous transport means (GS1 Temporary Code) Miscellaneous means of transport not further defined.

## Dodatek A (informativni)

### Poslovni termini (BT)

#### A.1 Seznam in opis poslovnih terminov (BT) in skupin poslovnih terminov (BG)

Preglednica vsebuje seznam in opis poslovnih terminov ter izraze XPath eSLOG 2.0 eNaročilo.

Oznaka	Poslovni termin	eSLOG 2.0 eNaročilo XPath
BT-1	Unikatna številka sporočila, ki jo določi pošiljatelj	/PurchaseOrder/M_ORDERSS_UNH/D_0062
BT-2	Oznaka vrste naročila	/PurchaseOrder/M_ORDERSS_BGM/C_C002/D_1001
BT-3	Številka naročila, ki jo določi pošiljatelj	/PurchaseOrder/M_ORDERSS_BGM/C_C106/D_1004
BT-4	Vloga dokumenta naročila	/PurchaseOrder/M_ORDERSS_BGM/D_1225
BT-5	Datum in čas izdelave sporočila (137)	/PurchaseOrder/M_ORDERSS_DTM[C_C507/D_2005='137']/C_C507/D_2380
BT-6	Želen datum dobave (2)	/PurchaseOrder/M_ORDERSS_DTM[C_C507/D_2005='2']/C_C507/D_2380
BT-7	Preostali datumi, vezani na naročilo	/PurchaseOrder/M_ORDERSS_DTM[C_C507/D_2380 (za D_2005='137' oz. D_2005='2' se uporabi BT-5 oz. BT-6)
BT-8	Navodila za dostavo v nestrukturirani obliki (DIN)	/PurchaseOrder/M_ORDERSS_FTX[D_4451='DIN']/C_C108/D_4440
BT-9	Informacije glede nakupa v nestrukturirani obliki (PUR)	/PurchaseOrder/M_ORDERSS_FTX[D_4451='PUR']/C_C108/D_4440
BT-10	Valuta zneskov na naročilu	/PurchaseOrder/M_ORDERSSG_SG7[S_CUX/C_C504/D_6347='2']/S_CUX/C_C504/D_6345
BG-1	Referenčni dokumenti	
BT-11	Tip referenčnega dokumenta, na katerega se naročilo navezuje	/PurchaseOrder/M_ORDERSSG_SG1/S_RFF/C_C506/D_1153
BT-12	Številka referenčnega dokumenta, na katerega se naročilo navezuje	/PurchaseOrder/M_ORDERSSG_SG1/S_RFF/C_C506/D_1154
BT-13	Datum referenčnega dokumenta, na katerega se naročilo navezuje	/PurchaseOrder/M_ORDERSSG_SG1/S_DTM[C_C507/D_2005='171']/C_C507/D_2380
BG-2	Podatki o kupcu	
BT-14	GLN kupca (BY)	/PurchaseOrder/M_ORDERSSG_SG2[S_NAD/D_3035='BY']/S_NAD/C_C082/D_3039
BT-15	Davčna številka kupca (VA)	/PurchaseOrder/M_ORDERSSG_SG2[S_NAD/D_3035='BY']/G_SG3[S_RFF/C_C506/D_1153='VA']/S_RFF/C_C506/D_1154
BT-16	Referenčni podatki kupca	/PurchaseOrder/M_ORDERSSG_SG2[S_NAD/D_3035='BY']/G_SG3/S_RFF/C_C506/D_1154 (za D_1153='VA' se uporabi BT-15)
BG-3	Naziv in naslov kupca	
BT-17	Naziv kupca	/PurchaseOrder/M_ORDERSSG_SG2[S_NAD/D_3035='BY']/S_NAD/C_C080/D_3036
BT-18	Ulica in hišna številka kupca	/PurchaseOrder/M_ORDERSSG_SG2[S_NAD/D_3035='BY']/S_NAD/C_C059/D_3042
BT-19	Mesto kupca	/PurchaseOrder/M_ORDERSSG_SG2[S_NAD/D_3035='BY']/S_NAD/D_3164
BT-20	Poštna številka kupca	/PurchaseOrder/M_ORDERSSG_SG2[S_NAD/D_3035='BY']/S_NAD/D_3251
BT-21	Država kupca	/PurchaseOrder/M_ORDERSSG_SG2[S_NAD/D_3035='BY']/S_NAD/D_3207

Oznaka	Poslovni termin	eSLOG 2.0 eNaročilo XPath
BG-4	Kontaktne podatki kupca	
BT-22	Kontaktne oseba	/PurchaseOrder/M_ORDERSG_SG2[S_NAD/D_3035='BY']/G_SG5/S_CTA/C_C056/D_3412
BT-23	Naslov za kontakt	/PurchaseOrder/M_ORDERSG_SG2[S_NAD/D_3035='BY']/G_SG5/S_COM/C_C076/D_3148
BG-5	Podatki o dobavitelju	
BT-24	GLN dobavitelja (SU)	/PurchaseOrder/M_ORDERSG_SG2[S_NAD/D_3035='SU']/S_NAD/C_C082/D_3039
BT-25	Davčna številka dobavitelja (VA)	/PurchaseOrder/M_ORDERSG_SG2[S_NAD/D_3035='SU']/G_SG3[S_RFF/C_C506/D_1153='VA']/S_RFF/C_C506/D_1154
BT-26	Referenčni podatek dobavitelja	/PurchaseOrder/M_ORDERSG_SG2[S_NAD/D_3035='SU']/G_SG3/S_RFF/C_C506/D_1154 (za D_1153='VA' se uporabi BT-25)
BG-6	Naziv in naslov dobavitelja	
BT-27	Naziv dobavitelja	/PurchaseOrder/M_ORDERSG_SG2[S_NAD/D_3035='SU']/S_NAD/C_C080/D_3036
BT-28	Ulica in hišna številka dobavitelja	/PurchaseOrder/M_ORDERSG_SG2[S_NAD/D_3035='SU']/S_NAD/C_C059/D_3042
BT-29	Mesto dobavitelja	/PurchaseOrder/M_ORDERSG_SG2[S_NAD/D_3035='SU']/S_NAD/D_3164
BT-30	Poštna številka dobavitelja	/PurchaseOrder/M_ORDERSG_SG2[S_NAD/D_3035='SU']/S_NAD/D_3251
BT-31	Država dobavitelja	/PurchaseOrder/M_ORDERSG_SG2[S_NAD/D_3035='SU']/S_NAD/D_3207
BG-7	Kontaktne podatki dobavitelja	
BT-32	Kontaktne oseba	/PurchaseOrder/M_ORDERSG_SG2[S_NAD/D_3035='SU']/G_SG5/S_CTA/C_C056/D_3412
BT-33	Naslov za kontakt	/PurchaseOrder/M_ORDERSG_SG2[S_NAD/D_3035='SU']/G_SG5/S_COM/C_C076/D_3148
BG-8	Podatki o dostavnem mestu	
BT-34	GLN dostavnega mesta (DP)	/PurchaseOrder/M_ORDERSG_SG2[S_NAD/D_3035='DP']/S_NAD/C_C082/D_3039
BT-35	Referenčni podatek dostavnega mesta	/PurchaseOrder/M_ORDERSG_SG2[S_NAD/D_3035='DP']/G_SG3/S_RFF/C_C506/D_1154
BG-9	Naziv in naslov dostavnega mesta	
BT-36	Naziv dostavnega mesta	/PurchaseOrder/M_ORDERSG_SG2[S_NAD/D_3035='DP']/S_NAD/C_C080/D_3036
BT-37	Ulica in hišna številka dostavnega mesta	/PurchaseOrder/M_ORDERSG_SG2[S_NAD/D_3035='DP']/S_NAD/C_C059/D_3042
BT-38	Mesto dostavnega mesta	/PurchaseOrder/M_ORDERSG_SG2[S_NAD/D_3035='DP']/S_NAD/D_3164
BT-39	Poštna številka dostavnega mesta	/PurchaseOrder/M_ORDERSG_SG2[S_NAD/D_3035='DP']/S_NAD/D_3251
BT-40	Država dostavnega mesta	/PurchaseOrder/M_ORDERSG_SG2[S_NAD/D_3035='DP']/S_NAD/D_3207
BG-10	Kontaktne podatki dostavnega mesta	
BT-41	Kontaktne oseba	/PurchaseOrder/M_ORDERSG_SG2[S_NAD/D_3035='DP']/G_SG5/S_CTA/C_C056/D_3412
BT-42	Naslov za kontakt	/PurchaseOrder/M_ORDERSG_SG2[S_NAD/D_3035='DP']/G_SG5/S_COM/C_C076/D_3148
BG-11	Podatki o postavkah	
BT-43	Številka postavke	/PurchaseOrder/M_ORDERSG_SG28/S_LIN/D_1082
BT-44	GTIN-številka artikla, ki se naroča	/PurchaseOrder/M_ORDERSG_SG28/S_LIN/C_C212[D_7143='SRV']/D_7140
BT-45	Količina naročenega artikla (21)	/PurchaseOrder/M_ORDERSG_SG28/S_QTY[C_C186/D_6063='21']/C_C186/D_6060

Oznaka	Poslovni termin	eSLOG 2.0 eNaročilo XPath
BT-46	Enota mere naročenega artikla	/PurchaseOrder/M_ORDERSG_SG28/S_QTY/C_C186/D_6411
BT-47	Želen datum dobave artikla (2)	/PurchaseOrder/M_ORDERSG_SG28/S_DTM[C_C507/D_2005='2']/C_C507/D_2380
BT-48	Vrednost postavke (203)	/PurchaseOrder/M_ORDERSG_SG28[S_MOA/C_C516/D_5025='203']/S_MOA/C_C516/D_5004
BT-49	Informacije glede nakupa artikla v nestrukturirani obliki (PUR)	/PurchaseOrder/M_ORDERSG_SG28/S_FTX[D_4451='PUR']/C_C108/D_4440
BG-12	Identifikacija naročenega artikla	
BT-50	Tip identifikacije artikla	/PurchaseOrder/M_ORDERSG_SG28/S_PIA/D_4347
BT-51	Številka identifikacije artikla	/PurchaseOrder/M_ORDERSG_SG28/S_PIA/C_C212/D_7140
BT-52	Vrsta identifikacije artikla	/PurchaseOrder/M_ORDERSG_SG28/S_PIA/C_C212/D_7143
BT-53	Opis artikla	/PurchaseOrder/M_ORDERSG_SG28/S_IMD/C_C273/D_7008
BG-13	Podatki o ceni artikla	
BT-54	Vrsta cene artikla	/PurchaseOrder/M_ORDERSG_SG28/G_SG32/S_PRI/C_C509/D_5125
BT-55	Cena artikla	/PurchaseOrder/M_ORDERSG_SG28/G_SG32/S_PRI/C_C509/D_5118
BT-56	Specifikacija cene artikla	/PurchaseOrder/M_ORDERSG_SG28/G_SG32/S_PRI/C_C509/D_5387
BT-57	Količina na enoto cene	/PurchaseOrder/M_ORDERSG_SG28/G_SG32/S_PRI/C_C509/D_5284
BT-58	Merska enota cene	/PurchaseOrder/M_ORDERSG_SG28/G_SG32/S_PRI/C_C509/D_6411

**Dodatek B**  
(informativni)

**Shema eSLOG 2.0 eNaročilo**

**B.1 Shema .XML**

Aktualna shema .XML-dokumenta eSLOG 2.0 eNaročilo je dostopna na povezavi:

[https://epos.si/assets/docs/eSLOG20\\_ORDERS\\_v200.xsd](https://epos.si/assets/docs/eSLOG20_ORDERS_v200.xsd).

## **Dodatek C** (informativni)

### **Demonstracijski primer uporabe**

#### **C.1 Primer uporabe elementov segmenta**

V poglavju 9 je pri posameznih elementih segmenta naveden primer uporabe. Demonstracijski primer dokumenta eSLOG 2.0 eNaročila, ki vsebuje vse navedene primere za elemente, je dostopen na povezavi:

[https://epos.si/assets/docs/sample\\_eSLOG20\\_ORDERS\\_v200.xml](https://epos.si/assets/docs/sample_eSLOG20_ORDERS_v200.xml).



## Literatura

- [1] Direktiva 2014/55/EU Evropskega parlamenta in sveta z dne 16. aprila 2014 o izdajanju elektronskih računov pri javnem naročanju. Razpoložljivo na <http://eurlex.europa.eu/legal-content/EN/TXT/?uri=CELEX:32014L0055>.
- [2] EANCOM 2002 S4 Edition 2012
- [3] ISO/TS 20625:2002, *Electronic data interchange for administration, commerce and transport (EDIFACT) – Rules for generation of XML scheme files (XSD) on the basis of EDI(FACT) implementation guidelines*.
- [4] SIST EN 16931-1:2017, *Elektronsko izdajanje računov – 1. del: Semantični podatkovni model ključnih elementov za elektronski račun*.
- [5] Uredba (EU), št. 910/2014, Evropskega parlamenta in sveta z dne 23. julija 2014 o elektronski identifikaciji in storitvah zaupanja za elektronske transakcije na notranjem trgu in o razveljavitvi Direktive 1999/93/ES. Razpoložljivo na <http://eurlex.europa.eu/legal-content/EN/TXT/?uri=CELEX:32014R0910>.
- [6] W3C XML shema. Razpoložljivo na <https://www.w3.org/TR/xmlsig-core/xmlsig-core-schema.xsd>.
- [7] W3C-priporočilo za validacijo elementov. Razpoložljivo na <https://www.w3.org/TR/xmlsig-core2/>.
- [8] Zakon o davku na dodano vrednost (ZDDV-1), neuradno prečiščeno besedilo št. 14